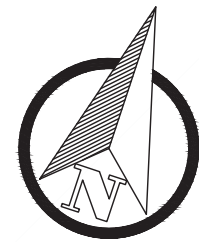
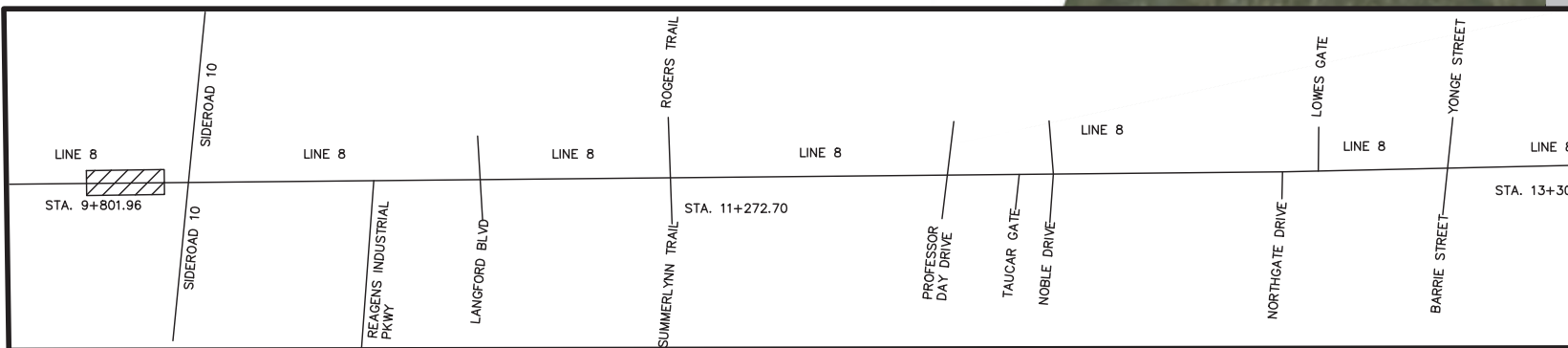
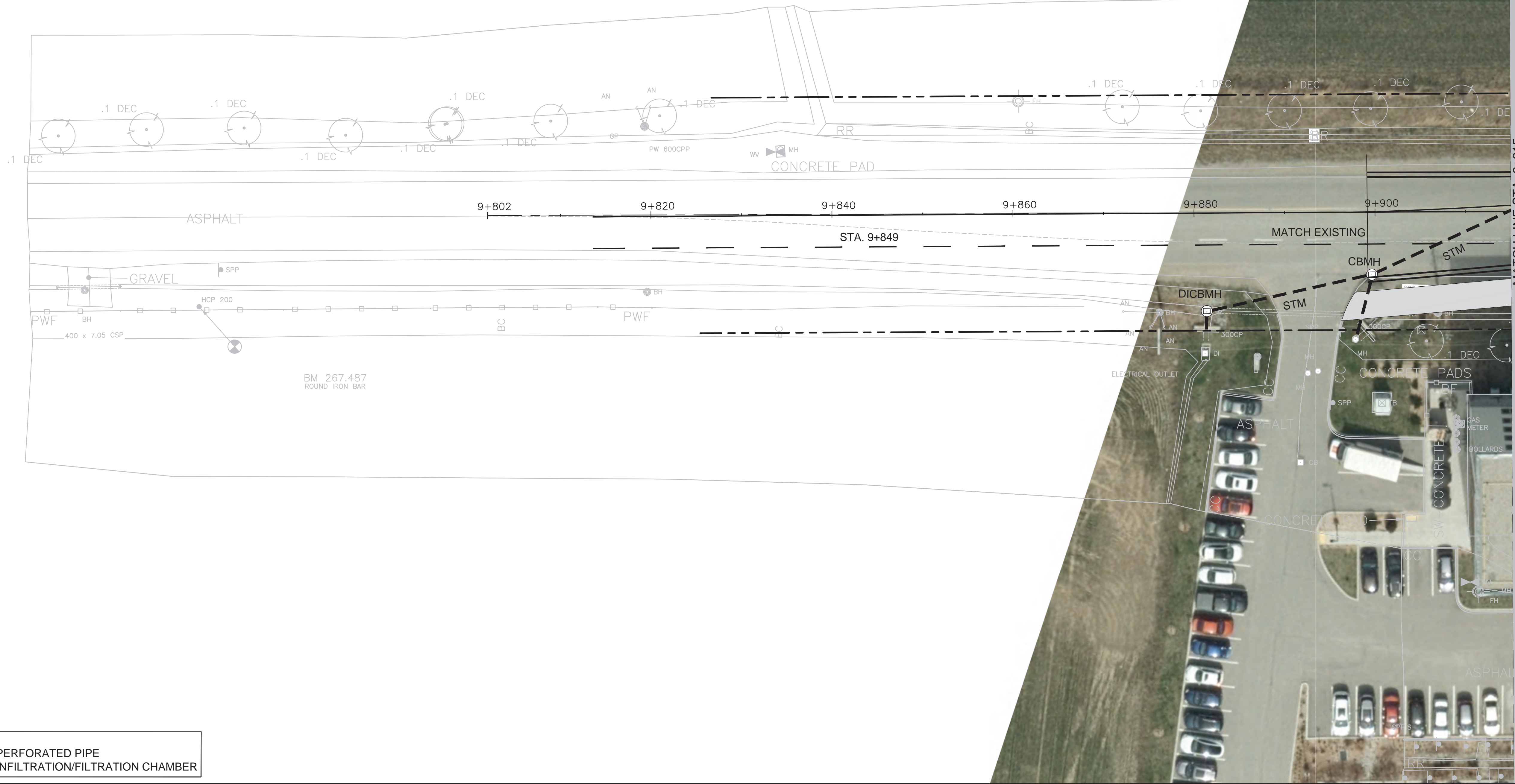


FILE: g:\projects backup\1640 - line 8 2022\8 working drawings\esr drawings\Line 8 New Construction.dwg



LEGEND:	
	PERFORATED PIPE
	INFILTRATION/FILTRATION CHAMBER



NO.	REVISIONS	DATE	BY
1	ISSUE FOR ESR	22/09/2025	MS
2			
3			
4			
5			
6			



LINE 8 NEW CONSTRUCTION

STA. 9+850 TO STA. 9+915

TOWN OF BRADFORD
LINE 8 AND SIDEROAD 10
RECONSTRUCTION

SCALE HOR. 1:250	VERT. N/A
DESIGNED MS	DRAWN MS
REVIEWED BK	DATE 9/22/2025

SHEET NO.
01

FILE: g:\projects backup\1640 - line 8 2022\8 working drawings\esr drawings\Line 8 New Construction.dwg



NO.	REVISIONS	DATE	BY
1	ISSUE FOR ESR	22/09/2025	MS
2			
3			
4			
5			
6			



LINE 8 NEW CONSTRUCTION

STA. 9+915 TO STA. 10+096

TOWN OF BRADFORD
LINE 8 AND SIDEROAD 10
RECONSTRUCTION

SCALE HOR. 1:250	VERT. N/A
DESIGNED MS	DRAWN MS
REVIEWED BK	DATE 9/22/2025

SHEET NO.
02

FILE: g:\projects backup\1640 - line 8 2022\8 working drawings\esr drawings\Line 8 New Construction.dwg



LEGEND:	
	PERFORATED PIPE
	INFILTRATION/FILTRATION CHAMBER



NO.	REVISIONS	DATE	BY
1	ISSUE FOR ESR	22/09/2025	MS
2			
3			
4			
5			
6			



LINE 8 NEW CONSTRUCTION

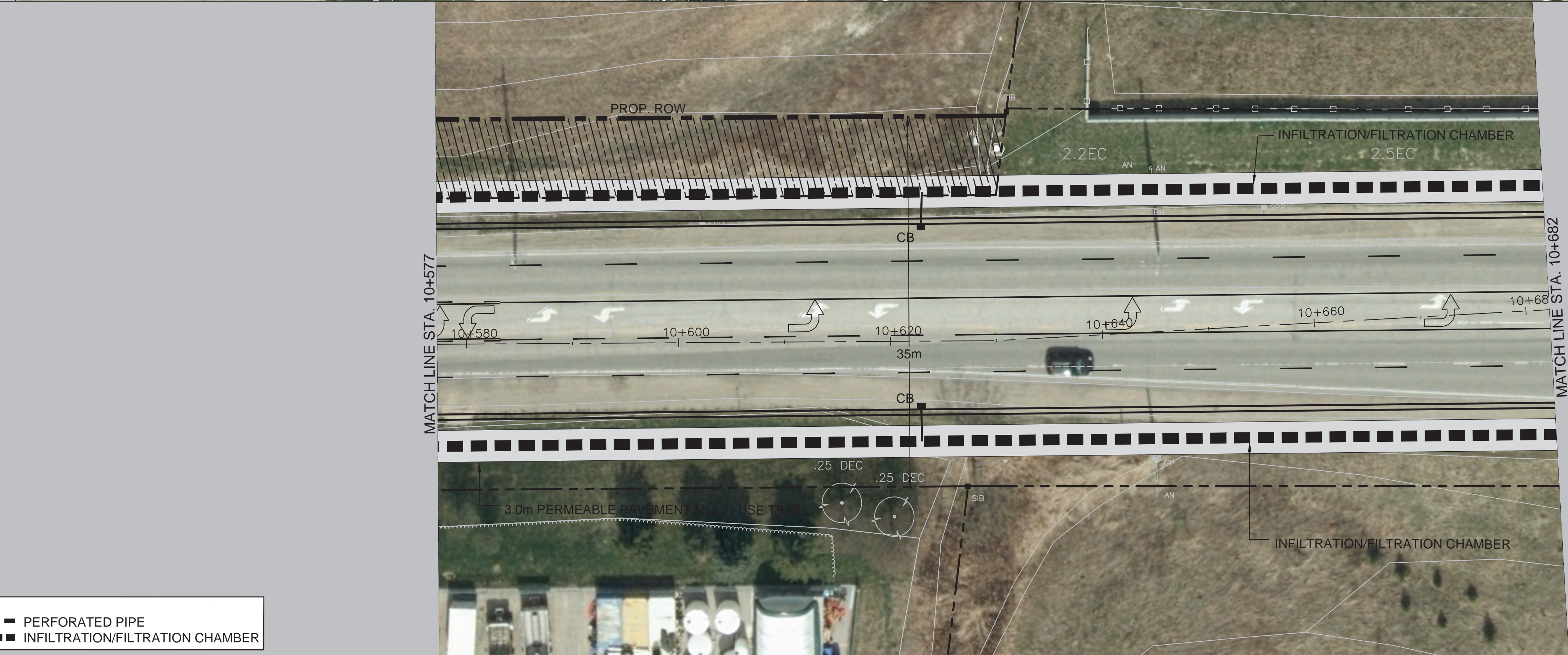
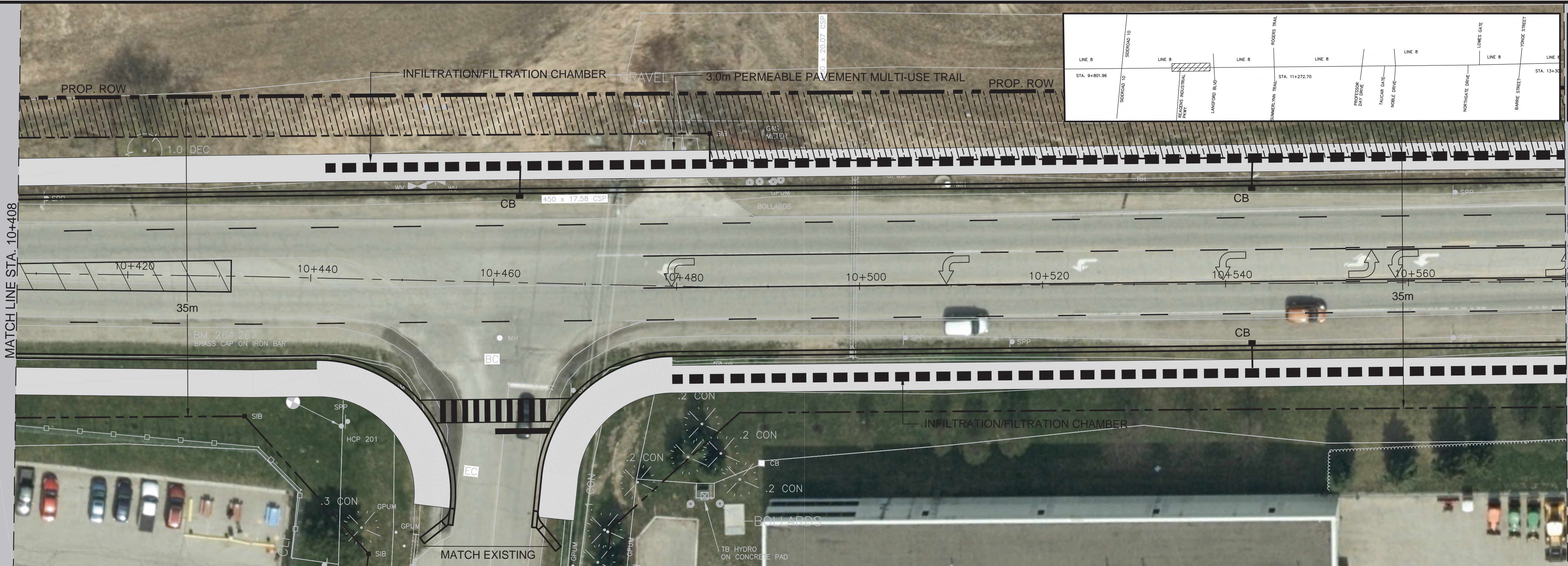
STA. 10+096 TO STA. 10+408

TOWN OF BRADFORD
LINE 8 AND SIDEROAD 10
RECONSTRUCTION

SCALE HOR. 1:250	VERT. N/A
DESIGNED MS	DRAWN MS
REVIEWED BK	DATE 9/22/2025

SHEET NO.
03

FILE: g:\projects\backup\1640 - line 8 2022\8 working drawings\esr drawings\Line 8 New Construction.dwg



LEGEND:	
	PERFORATED PIPE
	INFILTRATION/FILTRATION CHAMBER



NO.	REVISIONS	DATE	BY
1	ISSUE FOR ESR	22/09/2025	MS
2			
3			
4			
5			
6			



LINE 8 NEW CONSTRUCTION

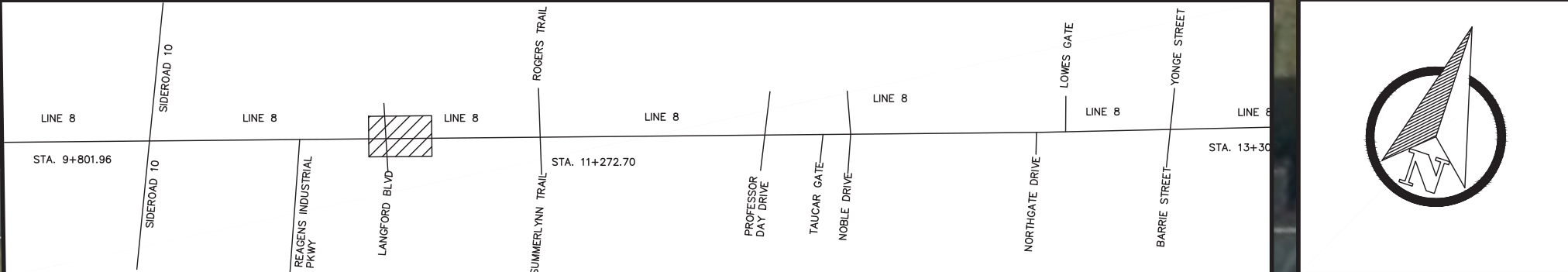
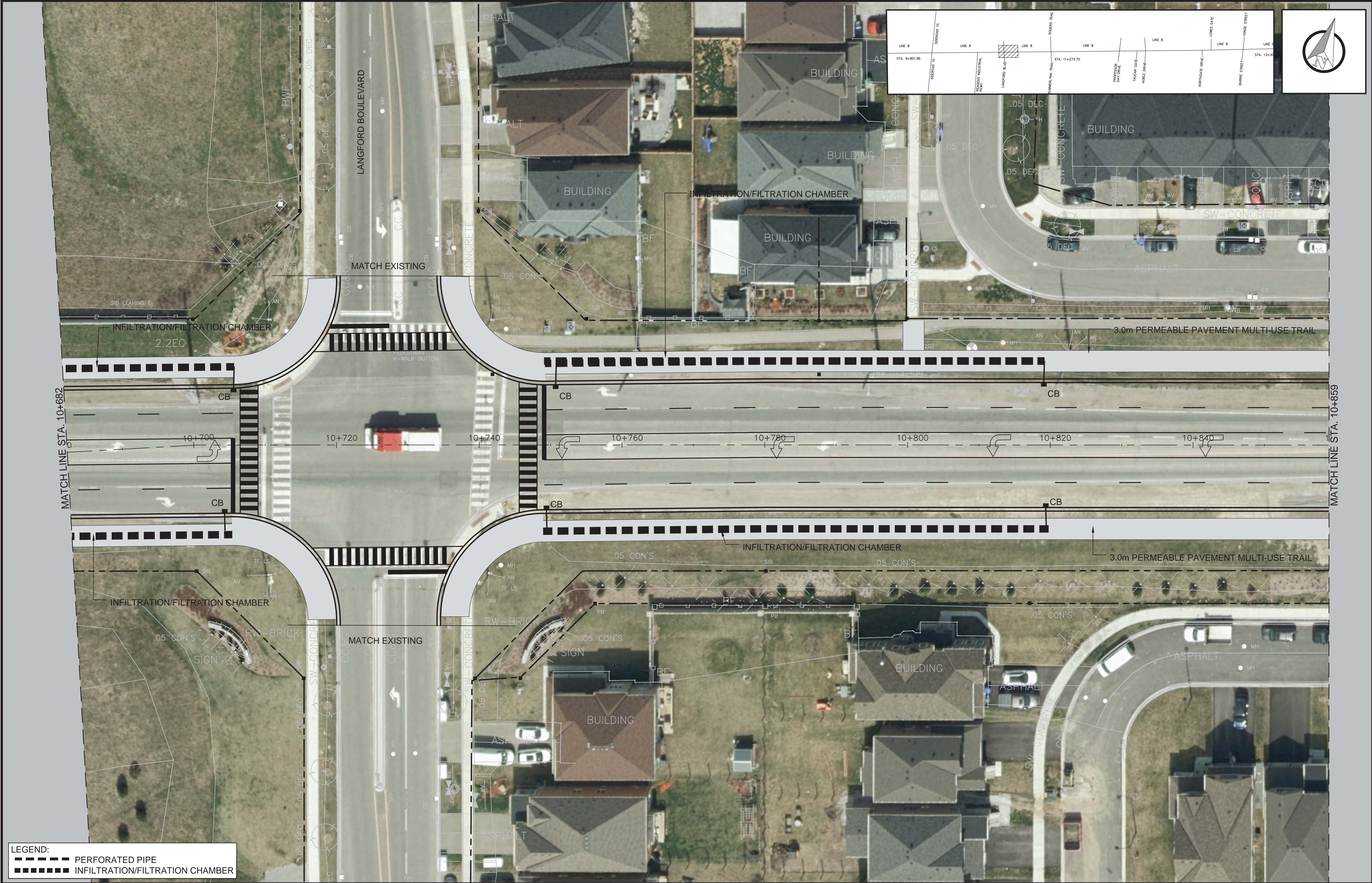
STA. 10+408 TO STA. 10+682

TOWN OF BRADFORD
LINE 8 AND SIDEROAD 10
RECONSTRUCTION

SCALE HOR. 1:250	VERT. N/A
DESIGNED MS	DRAWN MS
REVIEWED BK	DATE 9/22/2025

SHEET NO.
04

FILE: g:\projects backup\1640 - line 8 2022\8 working drawings\esr drawings\Line 8 New Construction.dwg



LEGEND:

---	PERFORATED PIPE
■■■■■	INFILTRATION/FILTRATION CHAMBER



NO.	REVISIONS	DATE	BY
1	ISSUE FOR ESR	22/09/2025	MS
2			
3			
4			
5			
6			



LINE 8 NEW CONSTRUCTION
STA. 10+682 TO STA. 10+859

TOWN OF BRADFORD
LINE 8 AND SIDEROAD 10
RECONSTRUCTION

SCALE HOR. 1:250	VERT. N/A	SHEET NO.
DESIGNED MS	DRAWN MS	05
REVIEWED BK	DATE 9/22/2025	

FILE: g:\projects backup\1640 - line 8 2022\8 working drawings\esr drawings\Line 8 New Construction.dwg



LEGEND:

- PERFORATED PIPE
- INFILTRATION/FILTRATION CHAMBER



NO.	REVISIONS	DATE	BY
1	ISSUE FOR ESR	22/09/2025	MS
2			
3			
4			
5			
6			



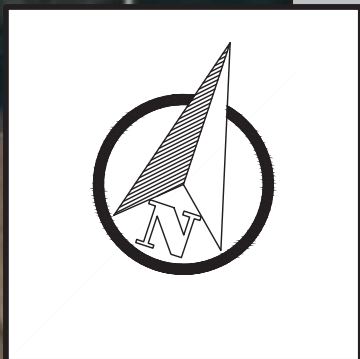
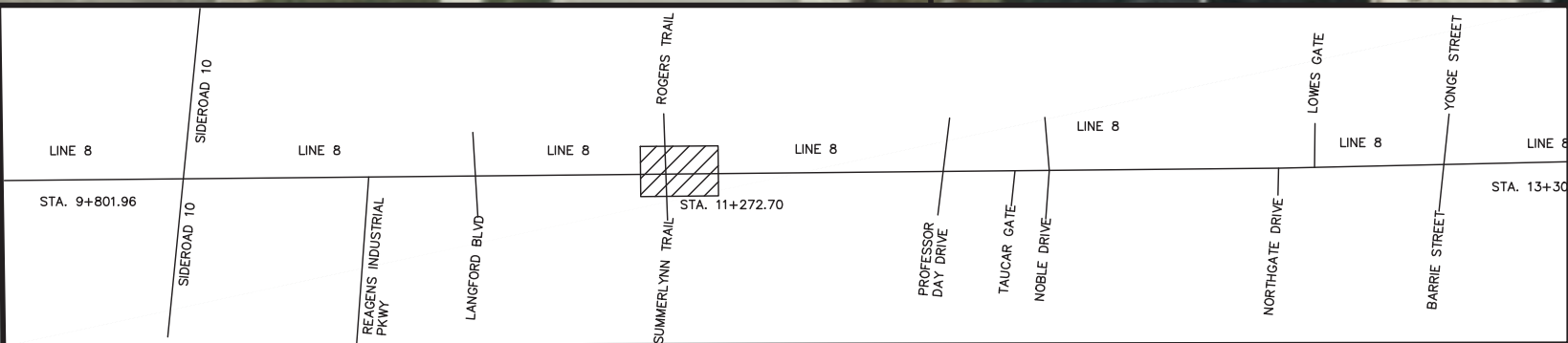
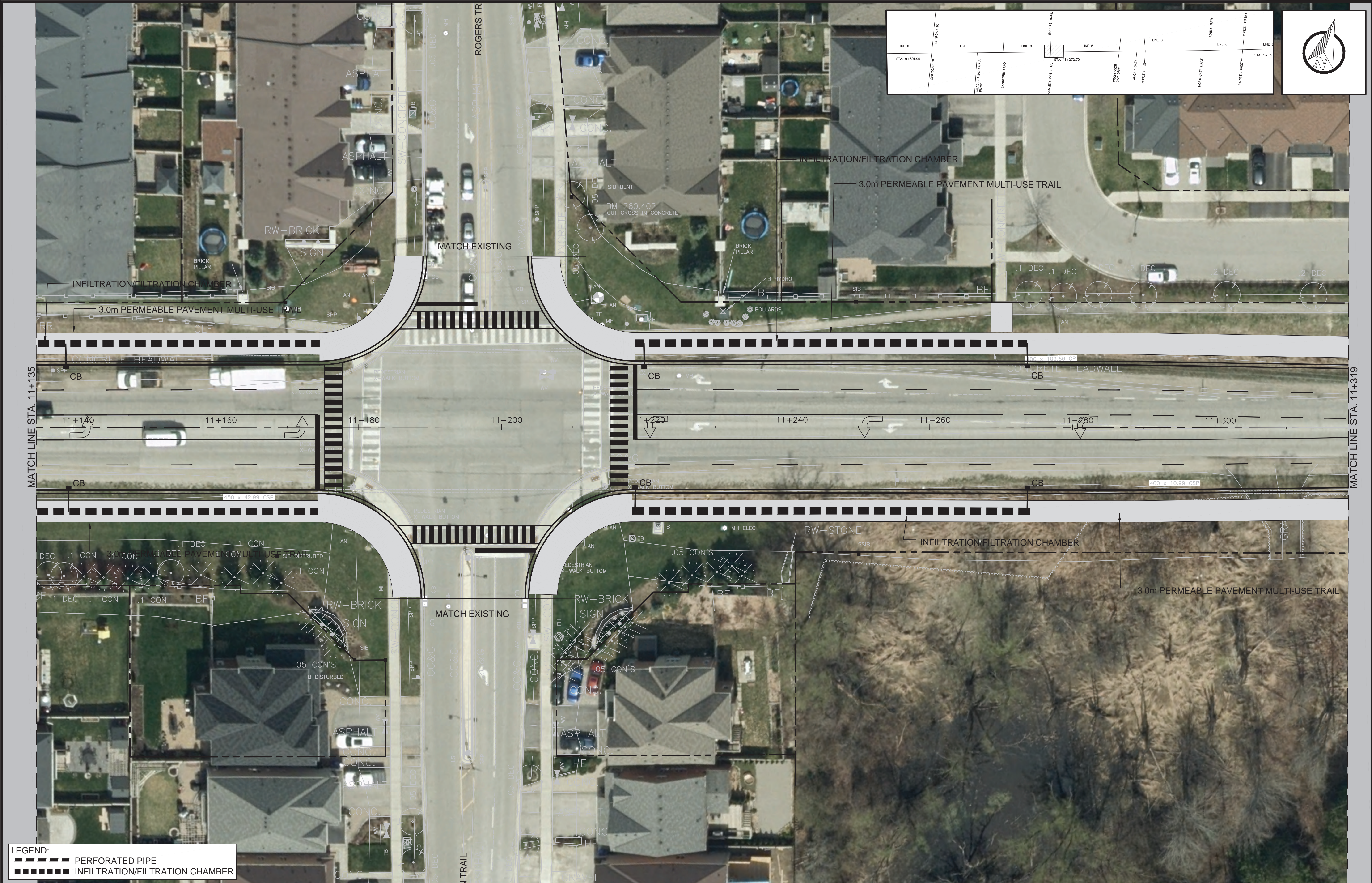
LINE 8 NEW CONSTRUCTION

STA. 10+859 TO STA. 11+135

TOWN OF BRADFORD
LINE 8 AND SIDEROAD 10
RECONSTRUCTION

SCALE HOR. 1:250	VERT. N/A	SHEET NO.
DESIGNED MS	DRAWN MS	06
REVIEWED BK	DATE 9/22/2025	

FILE: g:\projects backup\1640 - line 8 2022\8 working drawings\esr drawings\Line 8 New Construction.dwg



LEGEND:	
	PERFORATED PIPE
	INFILTRATION/FILTRATION CHAMBER



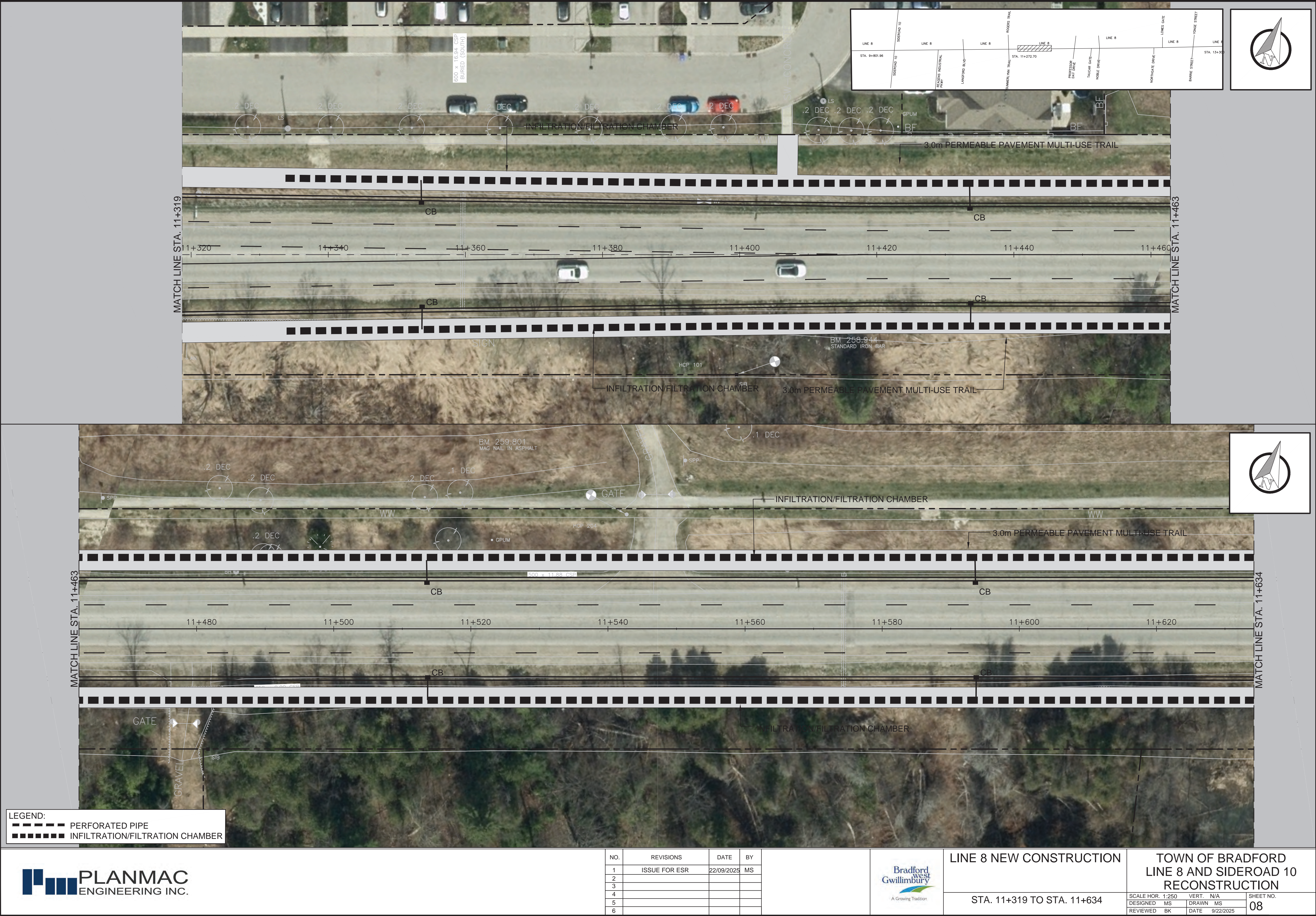
NO.	REVISIONS	DATE	BY
1	ISSUE FOR ESR	22/09/2025	MS
2			
3			
4			
5			
6			



LINE 8 NEW CONSTRUCTION
STA. 11+135 TO STA. 11+319

TOWN OF BRADFORD LINE 8 AND SIDEROAD 10 RECONSTRUCTION	
SCALE HOR. 1:250 DESIGNED MS REVIEWED BK	VERT. N/A DRAWN MS DATE 9/22/2025
SHEET NO. 07	

FILE: g:\projects backup\1640 - line 8 2022\8 working drawings\esr drawings\Line 8 New Construction.dwg



FILE: g:\projects backup\1640 - line 8 2022\8 working drawings\esr drawings\Line 8 New Construction.dwg



LEGEND:	
	PERFORATED PIPE
	INFILTRATION/FILTRATION CHAMBER



NO.	REVISIONS	DATE	BY
1	ISSUE FOR ESR	22/09/2025	MS
2			
3			
4			
5			
6			



LINE 8 NEW CONSTRUCTION

STA. 11+634 TO STA. 11+804

TOWN OF BRADFORD
LINE 8 AND SIDEROAD 10
RECONSTRUCTION

SCALE HOR. 1:250	VERT. N/A
DESIGNED MS	DRAWN MS
REVIEWED BK	DATE 9/22/2025

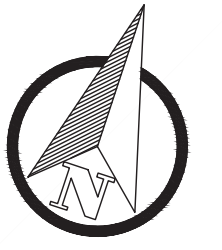
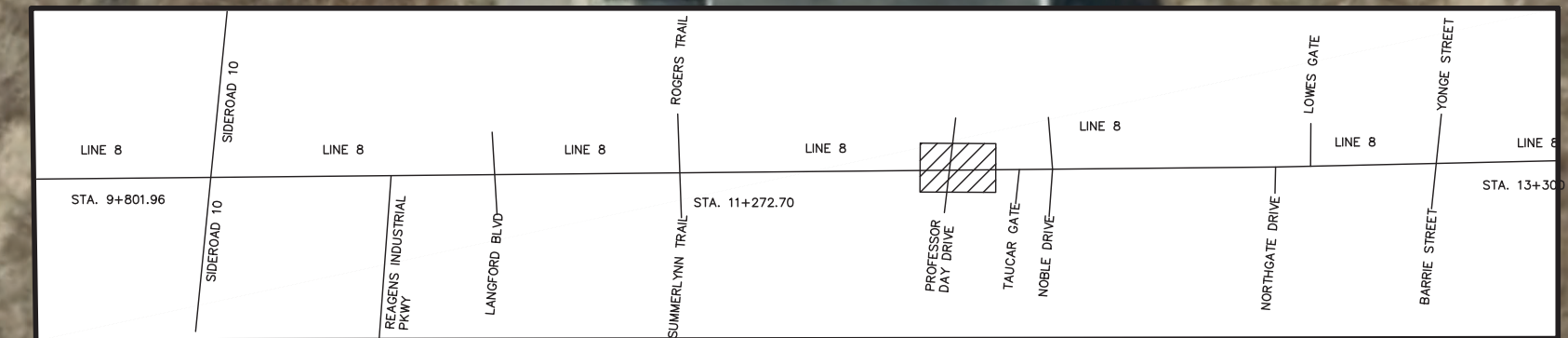
SHEET NO.
09

NO.	REVISIONS	DATE	BY
1	ISSUE FOR ESR	22/09/2025	MS
2			
3			
4			
5			
6			



STA. 11+804 TO STA. 11+988

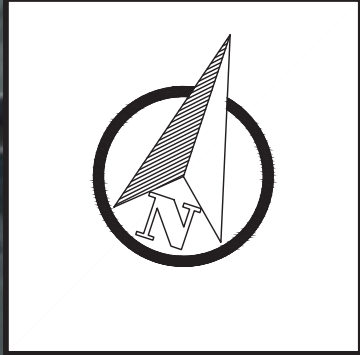
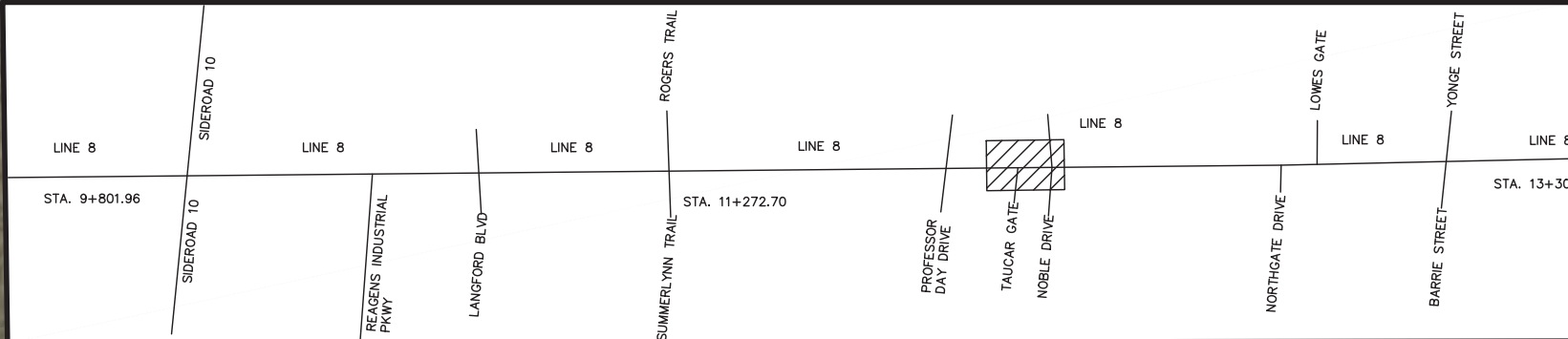
SCALE HOR. 1:250	VERT. N/A	SHEET NO. 10
DESIGNED MS	DRAWN MS	
REVIEWED BK	DATE 9/22/2025	




MATCH LINE STA. 11+804


MATCH LINE STA. 11+988

FILE: g:\projects backup\1640 - line 8 2022\8 working drawings\esr drawings\Line 8 New Construction.dwg





NO.	REVISIONS	DATE	BY
1	ISSUE FOR ESR	22/09/2025	MS
2			
3			
4			
5			
6			



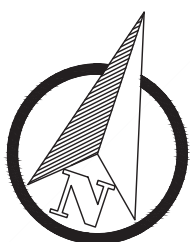
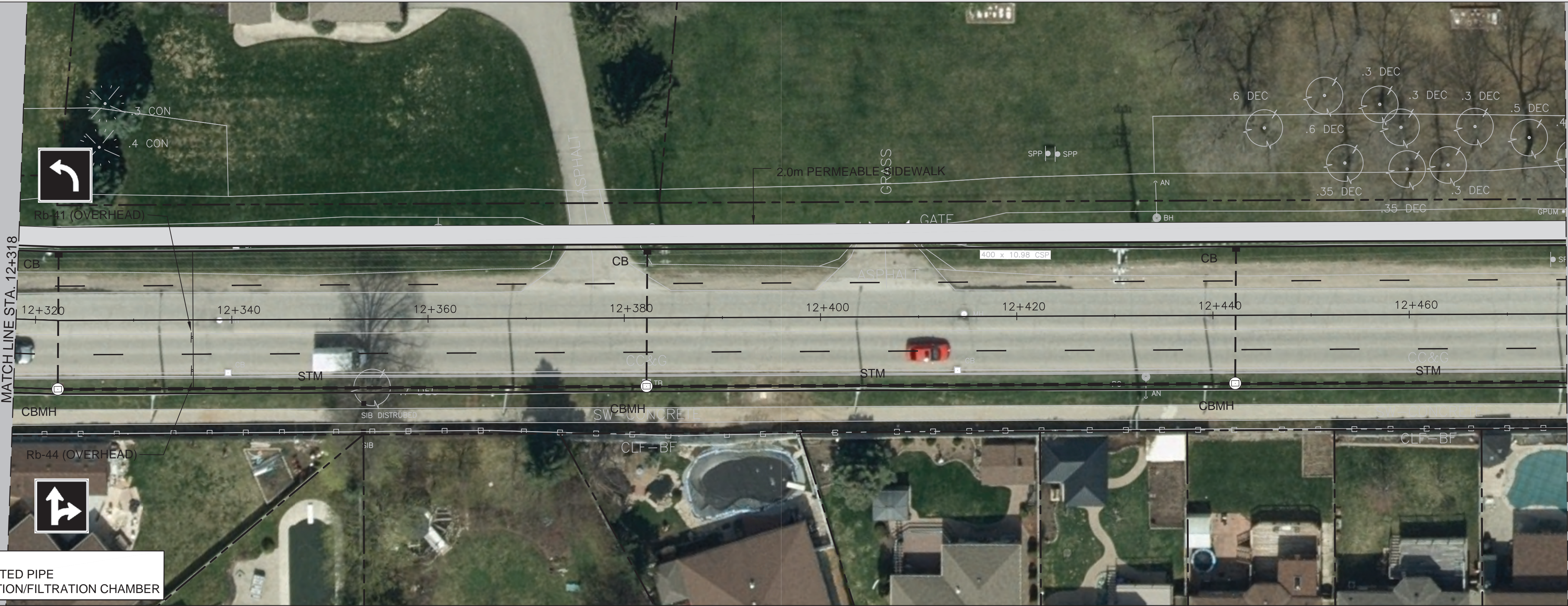
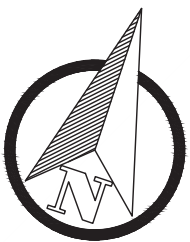
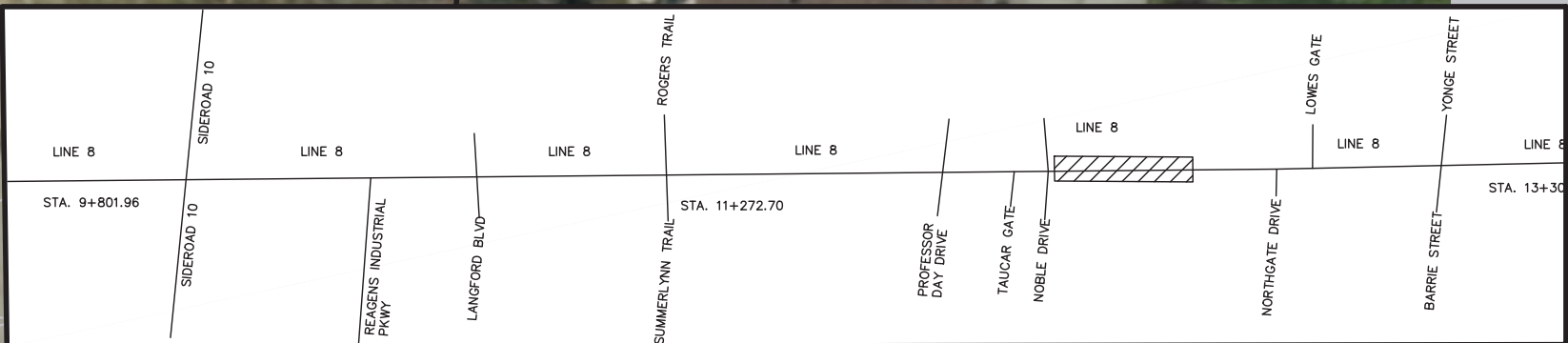
LINE 8 NEW CONSTRUCTION

STA. 11+988 TO STA. 12+166

**TOWN OF BRADFORD
LINE 8 AND SIDEROAD 10
RECONSTRUCTION**

SCALE HOR. 1:250	VERT. N/A	SHEET NO. 11
DESIGNED MS	DRAWN MS	
REVIEWED BK	DATE 9/22/2025	

FILE: g:\projects backup\1640 - line 8 2022\8 working drawings\esr drawings\Line 8 New Construction.dwg



LEGEND:	
	PERFORATED PIPE
	INFILTRATION/FILTRATION CHAMBER



NO.	REVISIONS	DATE	BY
1	ISSUE FOR ESR	22/09/2025	MS
2			
3			
4			
5			
6			



LINE 8 NEW CONSTRUCTION

STA. 12+166 TO STA. 12+476

TOWN OF BRADFORD
LINE 8 AND SIDEROAD 10
RECONSTRUCTION

SCALE HOR. 1:250	VERT. N/A
DESIGNED MS	DRAWN MS
REVIEWED BK	DATE 9/22/2025

SHEET NO.
12

FILE: g:\projects backup\1640 - line 8 2022\8 working drawings\esr drawings\Line 8 New Construction.dwg



LEGEND:

	PERFORATED PIPE
	INFILTRATION/FILTRATION CHAMBER



NO.	REVISIONS	DATE	BY
1	ISSUE FOR ESR	22/09/2025	MS
2			
3			
4			
5			
6			



LINE 8 NEW CONSTRUCTION

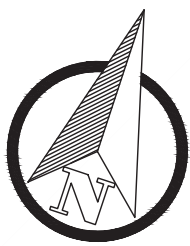
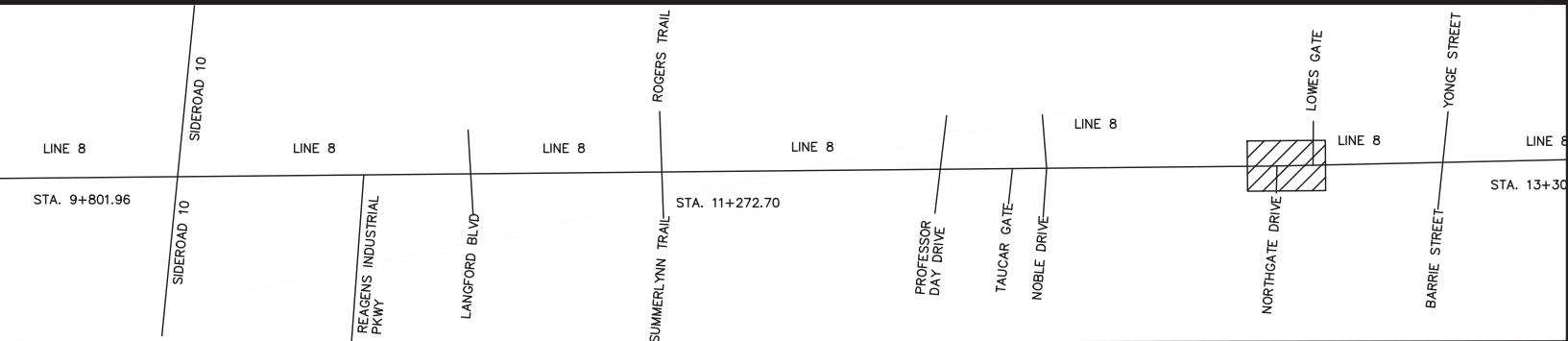
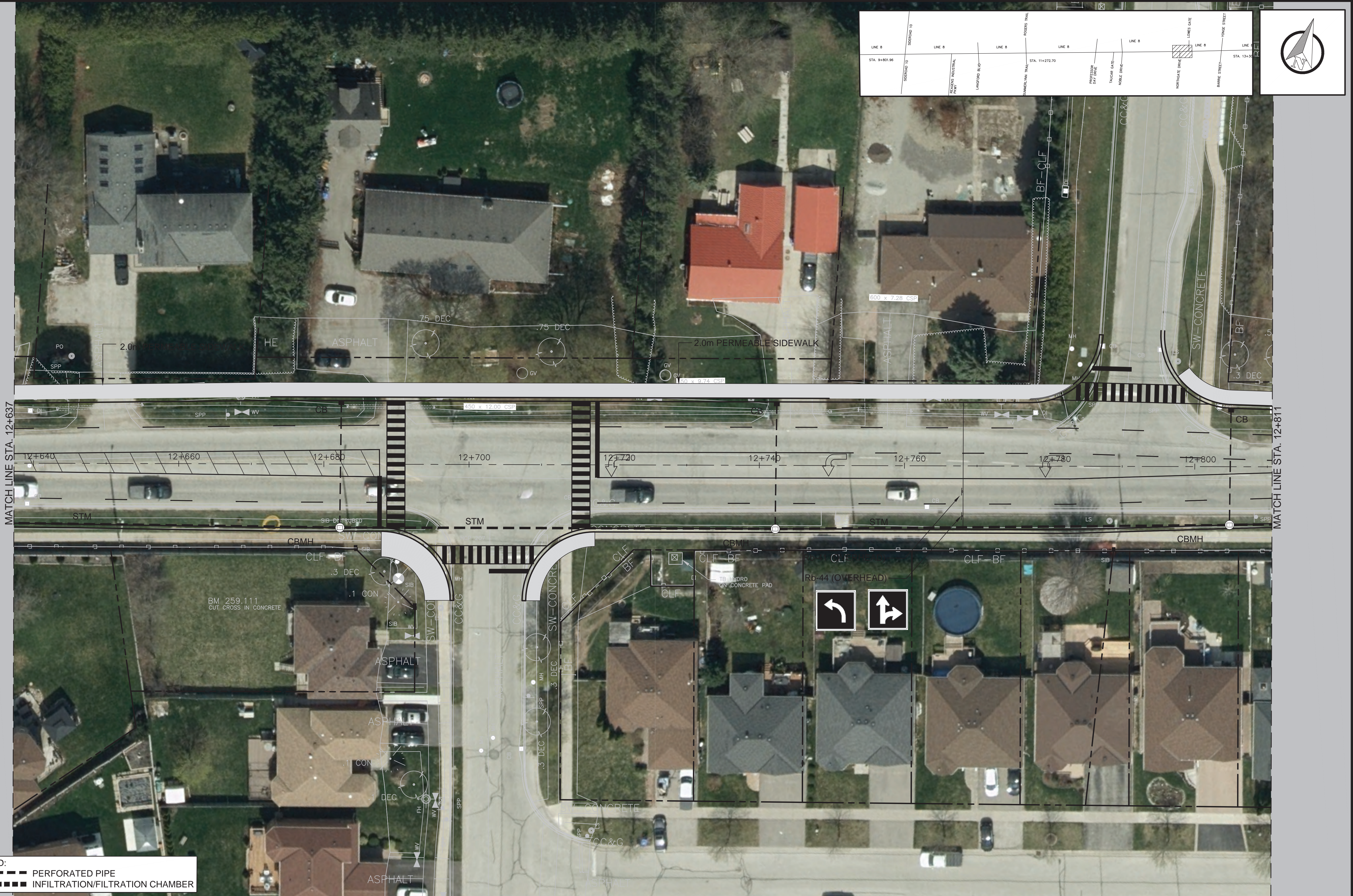
STA. 12+476 TO STA. 12+637

TOWN OF BRADFORD
LINE 8 AND SIDEROAD 10
RECONSTRUCTION

SCALE HOR. 1:250	VERT. N/A
DESIGNED MS	DRAWN MS
REVIEWED BK	DATE 9/22/2025

SHEET NO.
13

FILE: g:\projects backup\1640 - line 8 2022\8 working drawings\esr drawings\Line 8 New Construction.dwg



LEGEND:	
	PERFORATED PIPE
	INFILTRATION/FILTRATION CHAMBER



NO.	REVISIONS	DATE	BY
1	ISSUE FOR ESR	22/09/2025	MS
2			
3			
4			
5			
6			



LINE 8 NEW CONSTRUCTION

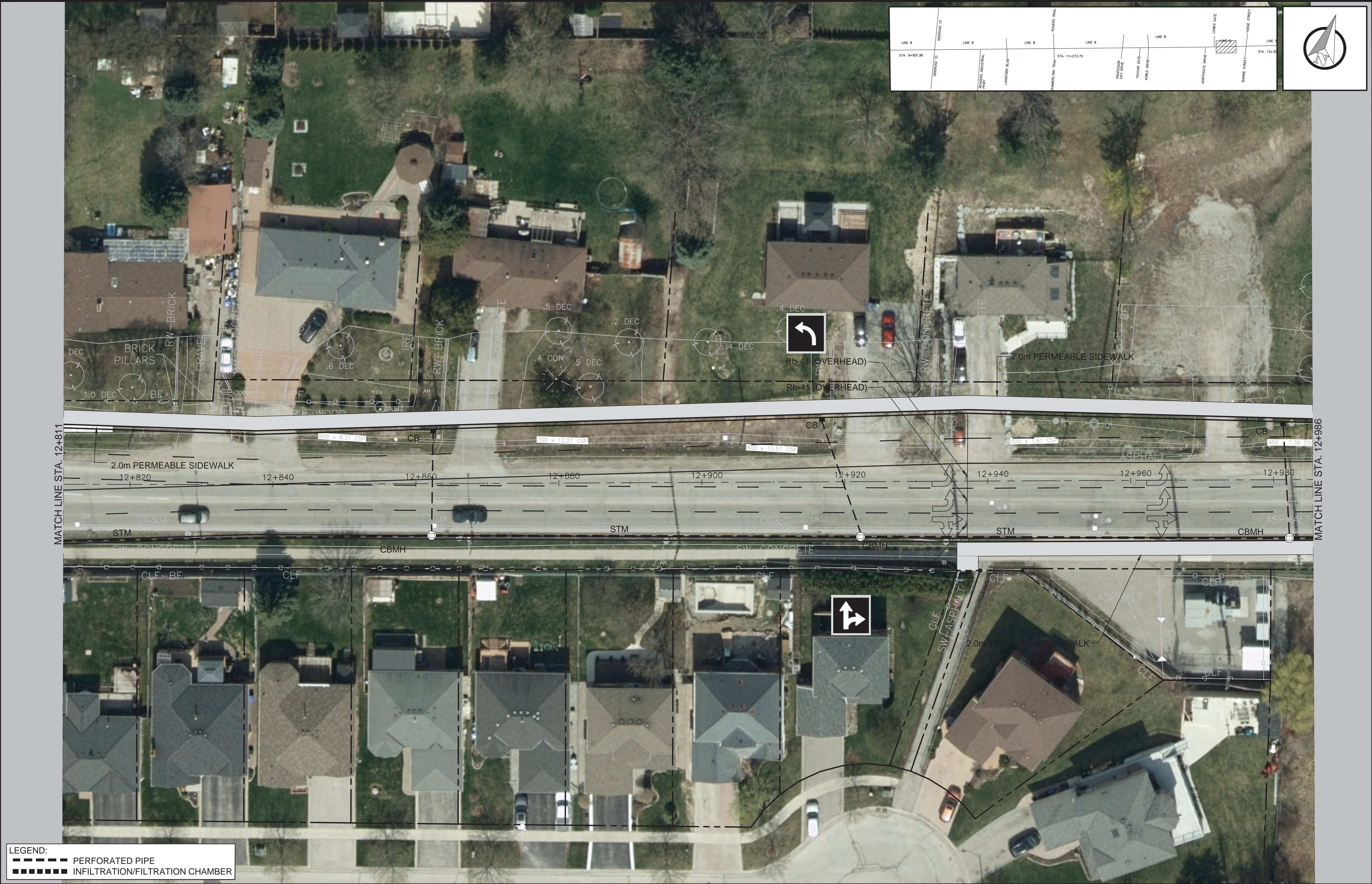
STA. 12+637 TO STA. 12+811

TOWN OF BRADFORD
LINE 8 AND SIDEROAD 10
RECONSTRUCTION

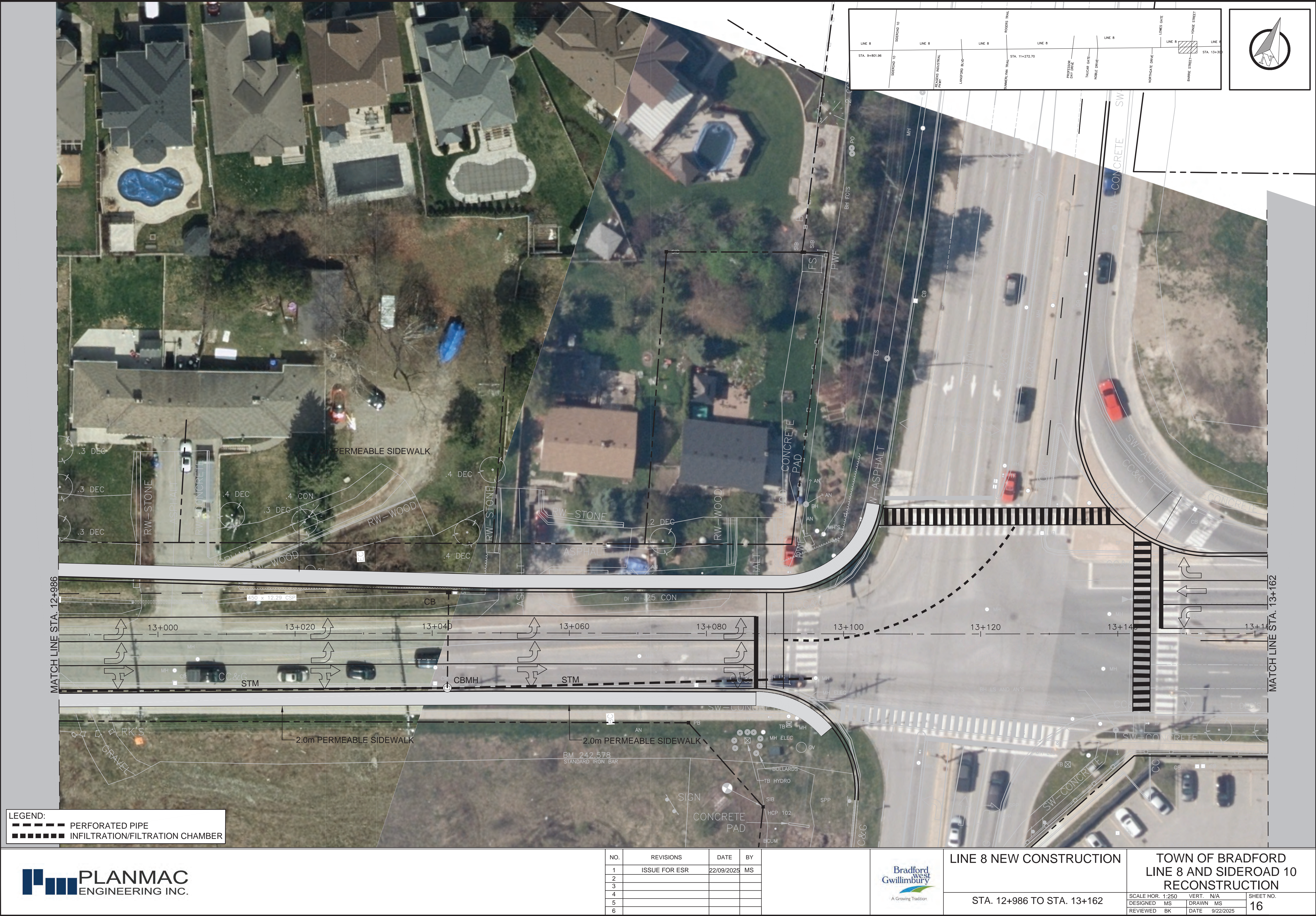
SCALE HOR. 1:250	VERT. N/A
DESIGNED MS	DRAWN MS
REVIEWED BK	DATE 9/22/2025

SHEET NO.
14

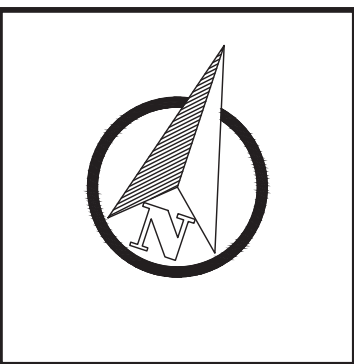
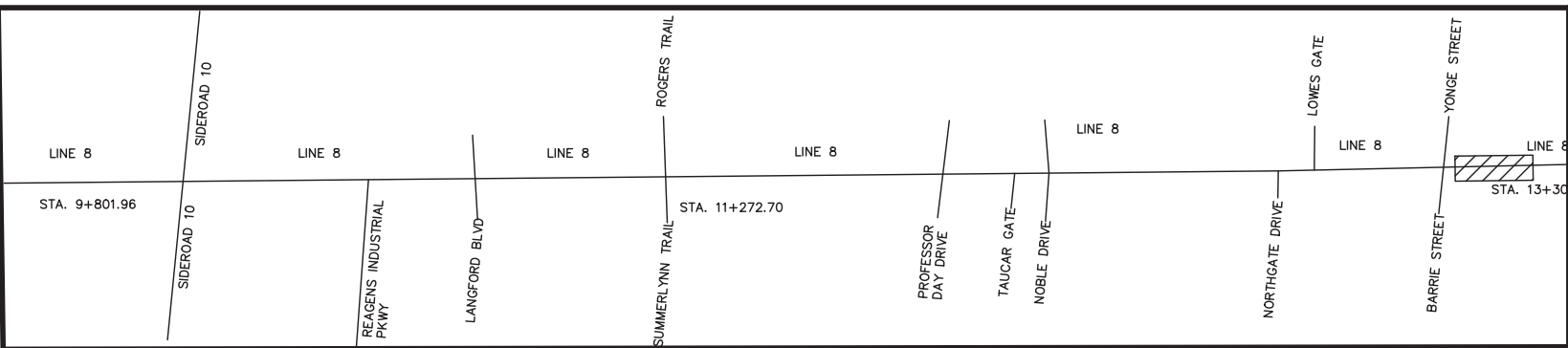
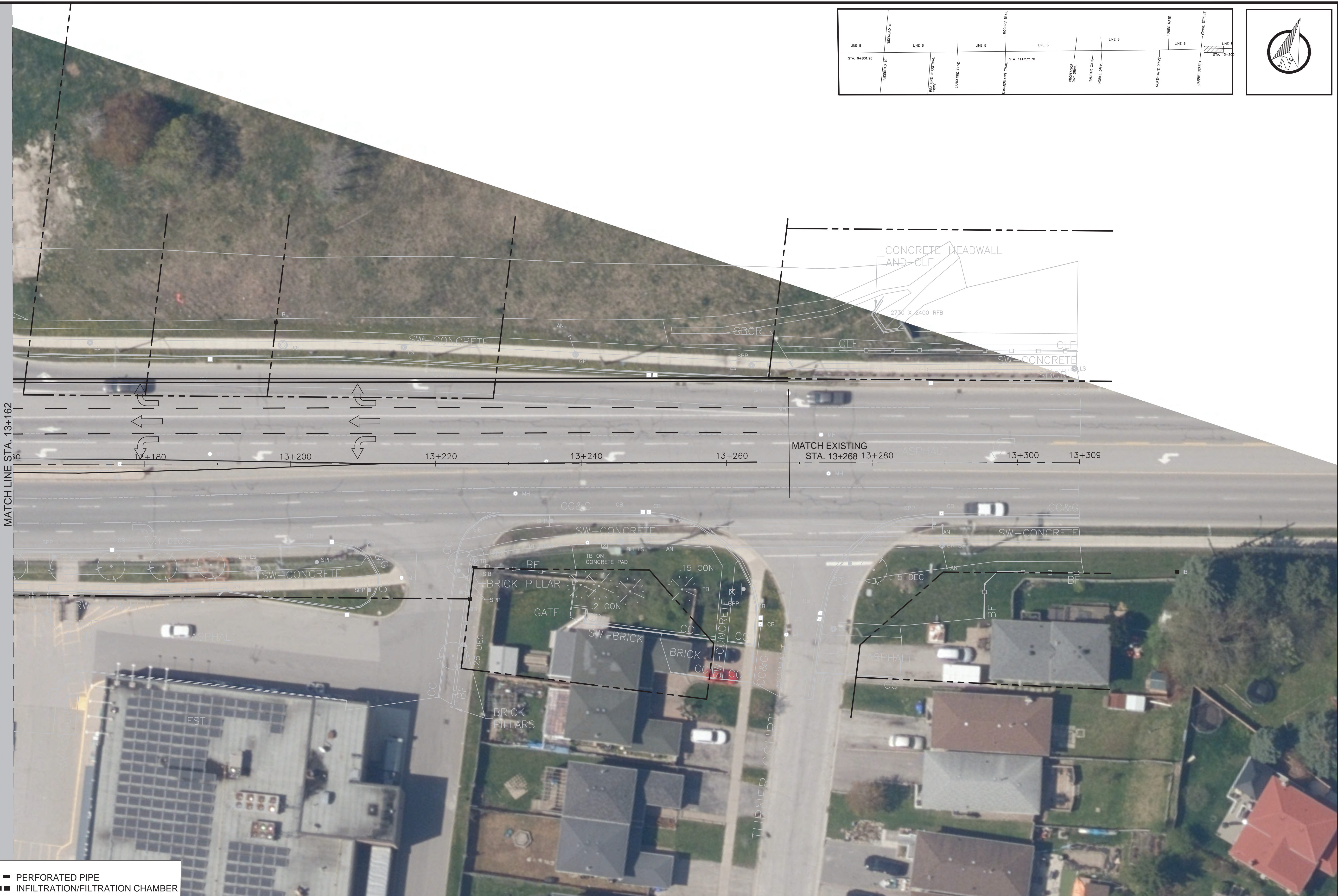
FILE: g:\projects backup\1640 - line 8 2022\8 working drawings\esr drawings\Line 8 New Construction.dwg



FILE: g:\projects backup\1640 - line 8 2022\8 working drawings\esr drawings\Line 8 New Construction.dwg



FILE: g:\projects backup\1640 - line 8 2022\8 working drawings\esr drawings\Line 8 New Construction.dwg



LEGEND:
--- PERFORATED PIPE
■■■■■ INFILTRATION/FILTRATION CHAMBER

PLANMAC
ENGINEERING INC.

NO.	REVISIONS	DATE	BY
1	ISSUE FOR ESR	22/09/2025	MS
2			
3			
4			
5			
6			

Bradford
Gwillimbury
A Growing Tradition

LINE 8 NEW CONSTRUCTION

STA. 13+162 TO STA. 13+268

TOWN OF BRADFORD
LINE 8 AND SIDEROAD 10
RECONSTRUCTION

SCALE HOR. 1:250 VERT. N/A
DESIGNED MS DRAWN MS
REVIEWED BK DATE 9/22/2025

SHEET NO.
17

FILE: g:\projects backup\1640 - line 8 2022\8 working drawings\esr drawings\Sideroad 10 New Construction.dwg



LEGEND:

- PERFORATED PIPE
- INFILTRATION/FILTRATION CHAMBER



NO.	REVISIONS	DATE	BY
1	ISSUE FOR ESR	22/09/2025	MS
2			
3			
4			
5			
6			

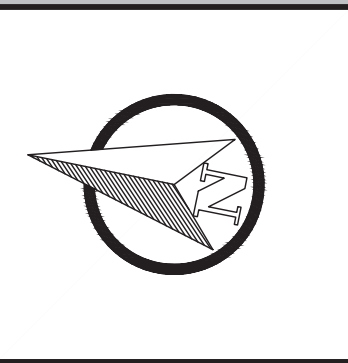
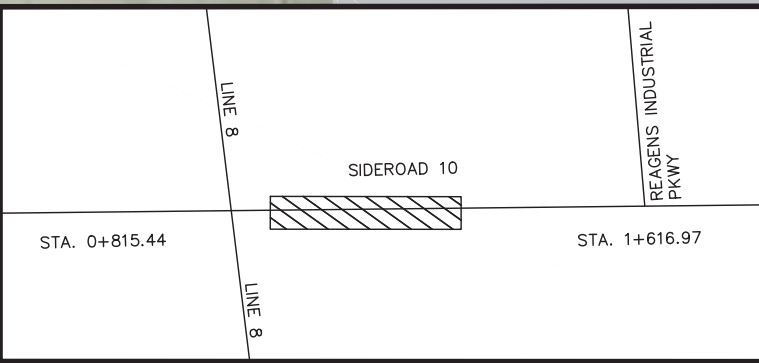
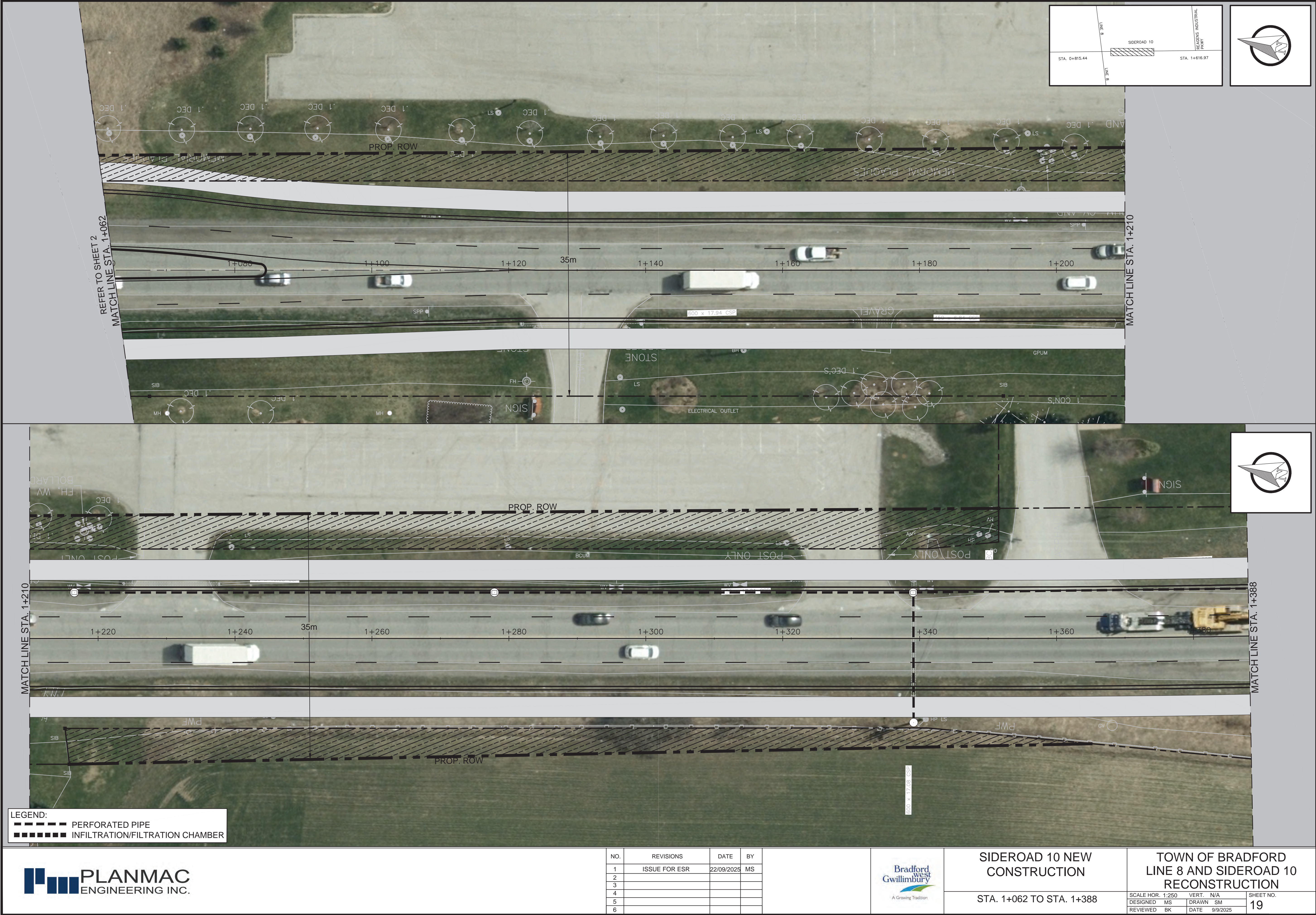


SIDEROAD 10 NEW
CONSTRUCTION

STA. 0+815 TO STA. 0+938

TOWN OF BRADFORD LINE 8 AND SIDEROAD 10 RECONSTRUCTION				SHEET NO.
SCALE HOR.	1:250	VERT.	N/A	18
DESIGNED	MS	DRAWN	SM	
REVIEWED	BK	DATE	9/9/2025	

FILE: g:\projects backup\1640 - line 8 2022\8 working drawings\esr drawings\Sideroad 10 New Construction.dwg



NO.	REVISIONS	DATE	BY
1	ISSUE FOR ESR	22/09/2025	MS
2			
3			
4			
5			
6			



SIDEROAD 10 NEW CONSTRUCTION

STA. 1+062 TO STA. 1+388

TOWN OF BRADFORD
LINE 8 AND SIDEROAD 10
RECONSTRUCTION

SCALE HOR. 1:250	VERT. N/A
DESIGNED MS	DRAWN SM
REVIEWED BK	DATE 9/9/2025

SHEET NO.
19

