

# *Building a Beautiful BUNG*

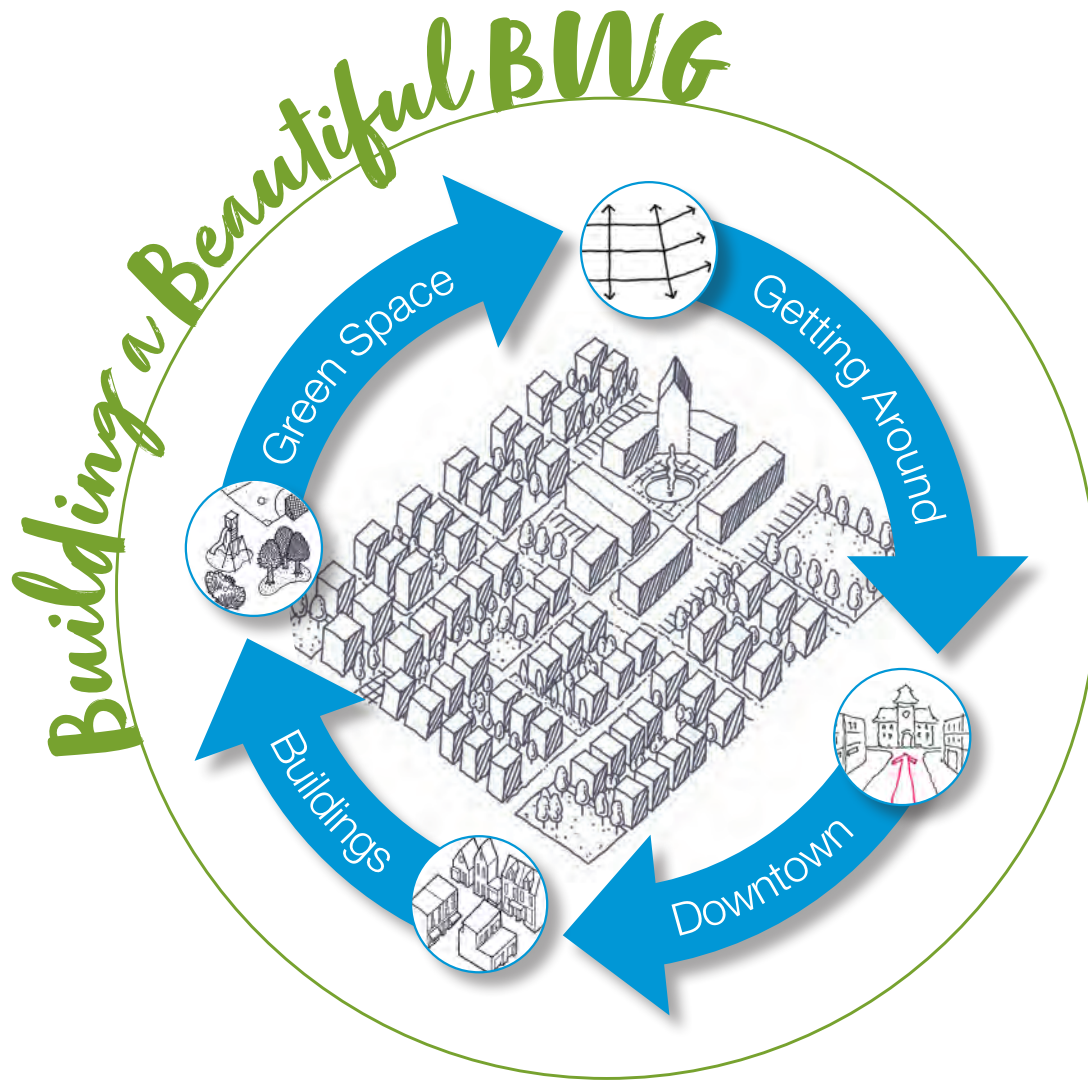
## TOWN-WIDE URBAN DESIGN GUIDELINES



**The Town of Bradford West Gwillimbury is preparing Town-Wide Urban Design Guidelines that help shape the form and character of future development in the town's urban area, and support its transition from a small rural Town to a medium sized Urban Centre.**

**The guidelines will provide strategies and recommendations for compatible designs that maintain and enhance the character defining elements of the community.**

The Town-Wide Urban Design Guidelines build on actions identified in the Town of Bradford West Gwillimbury planning frameworks.



## Town-Wide Urban Design Guidelines

- ✓ **Will** provide direction to the Town and developers for the design of infill and new developments in Bradford Downtown, Bond Head Village Core, Residential and Non-residential Areas, as well as for the design of the Public Realm.
- ✓ **Will** help developers understand the municipality's objectives for the design of Bradford West Gwillimbury.
- ✓ **Will** contain conceptual diagrams that demonstrate the design intent of the guidelines.
- ✓ **Will** inform municipal Council and staff in their review, and approval of development applications. Town-Wide Urban Design Guidelines are intended to influence the design of new development through Zoning, Plans of Subdivision/Condominium, Site Plan Approval and even the Minor Variance process.
- ✗ **Will not** determine the types, locations and numbers of different building types in specific neighbourhoods or areas in the community.
- ✗ **Will not** include development concepts for any particular location.

The Guidelines will be prepared over the next year.  
Keep an eye on the Town's webpage for more information on the project.