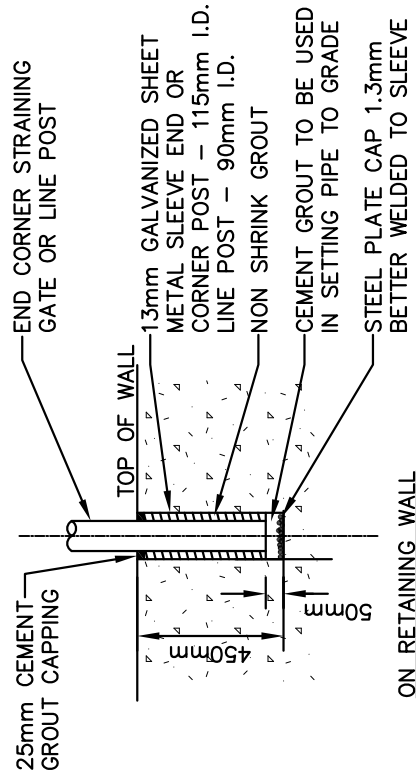
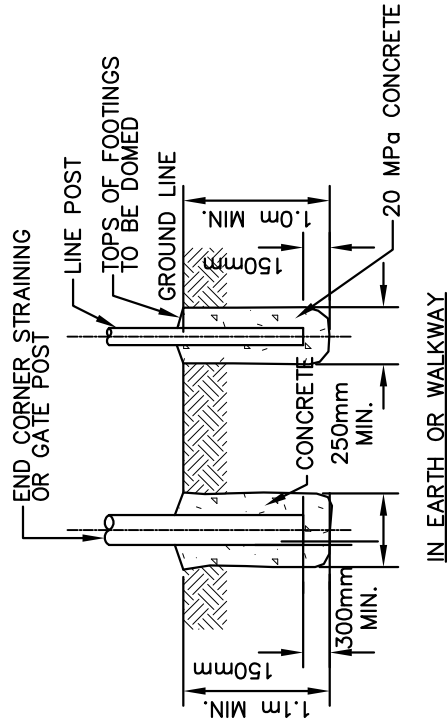


FENCE DETAILS



NOTES:

1. CHAIN LINK FABRIC TO BE BLACK VINYL COATED 3.5mm ϕ WITH 3.2mm GALVANIZED STEEL CORE WOVEN INTO A 38mm MESH.
 2. TOP & BOTTOM SELVAGE TO HAVE KNUCKLE FINISH.
 3. INDIVIDUAL PICKETS TO HAVE MIN. TENSILE STRENGTH OF 550 MPa.
 4. ALL POST RAILS, CONNECTORS & FITTINGS TO BE GALVANIZED & BLACK COATED.
- ALL DIMENSIONS IN mm UNLESS OTHERWISE SPECIFIED.

TOWN OF BRADFORD WEST GWILLIMBURY

CHAIN LINK FENCE

SCALE:

N.T.S.

LAST REVISED:

MAY 2014

STD.DWG.

J102