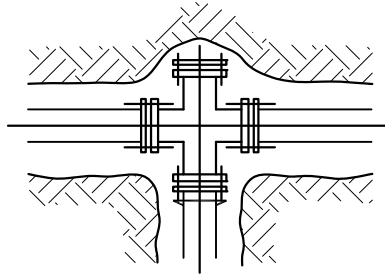
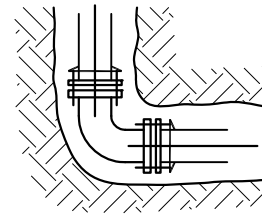


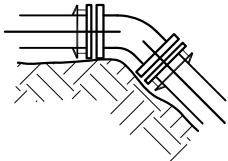
THRU LINE CONNECTION:
TEE



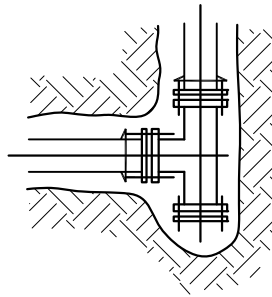
THRU LINE
CONNECTION: CROSS
USED AS TEE



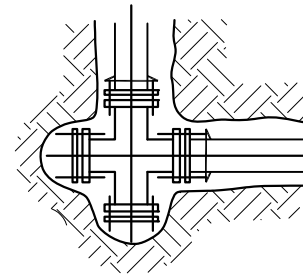
DIRECTION CHANGE
HORIZONTAL, ELBOW



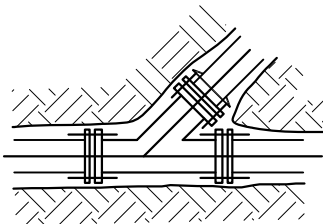
DIRECTION CHANGE
VERTICAL, BEND



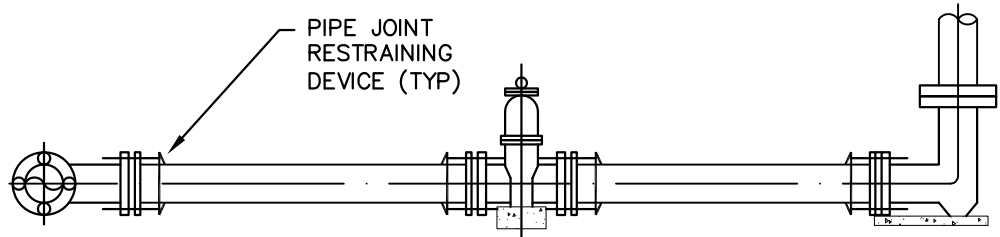
DIRECTION CHANGE TEE USED
AS ELBOW



DIRECTION CHANGE, CROSS
USED AS ELBOW



THRU CONNECTION, Y



HYDRANT RUNOUT

NOTES:

1. THE FOLLOWING JOINTS MUST BE RESTRAINED IN ALL DIRECTIONS:
 - A. BEND—INLET AND OUTLET
 - B. TEE—OUTLET BRANCH
 - C. WYE—OUTLET BRANCH
 - D. CAPS
 - E. PLUGS
 - F. ALL JOINTS ON HYDRANT RUNOUTS
 - G. VALVES
 - H. REDUCERS
 - I. SLEEVES
2. PIPE JOINTS TO BE RESTRAINED WHERE REQUIRED. MINIMUM RESTRAINED LENGTHS PER BWG DESIGN STANDARDS.
3. CATHODIC PROTECTION PER BWG DESIGN STANDARD D113.
4. ALL VALVES, FITTINGS AND MECHANICAL RESTRAINTS TO BE C/W DENSO PASTE, DENSO MASTIC AND DENSO TAPE OR APPROVED EQUAL, APPLIED TO MANUFACTURERS RECOMMENDATIONS.

ALL DIMENSIONS IN mm UNLESS OTHERWISE SPECIFIED

TOWN OF BRADFORD WEST GWILLIMBURY

**TYPICAL RESTRAINER
INSTALLATION**

SCALE: N.T.S.

LAST REVISED:
MAY 2014

STD.DWG.

D109