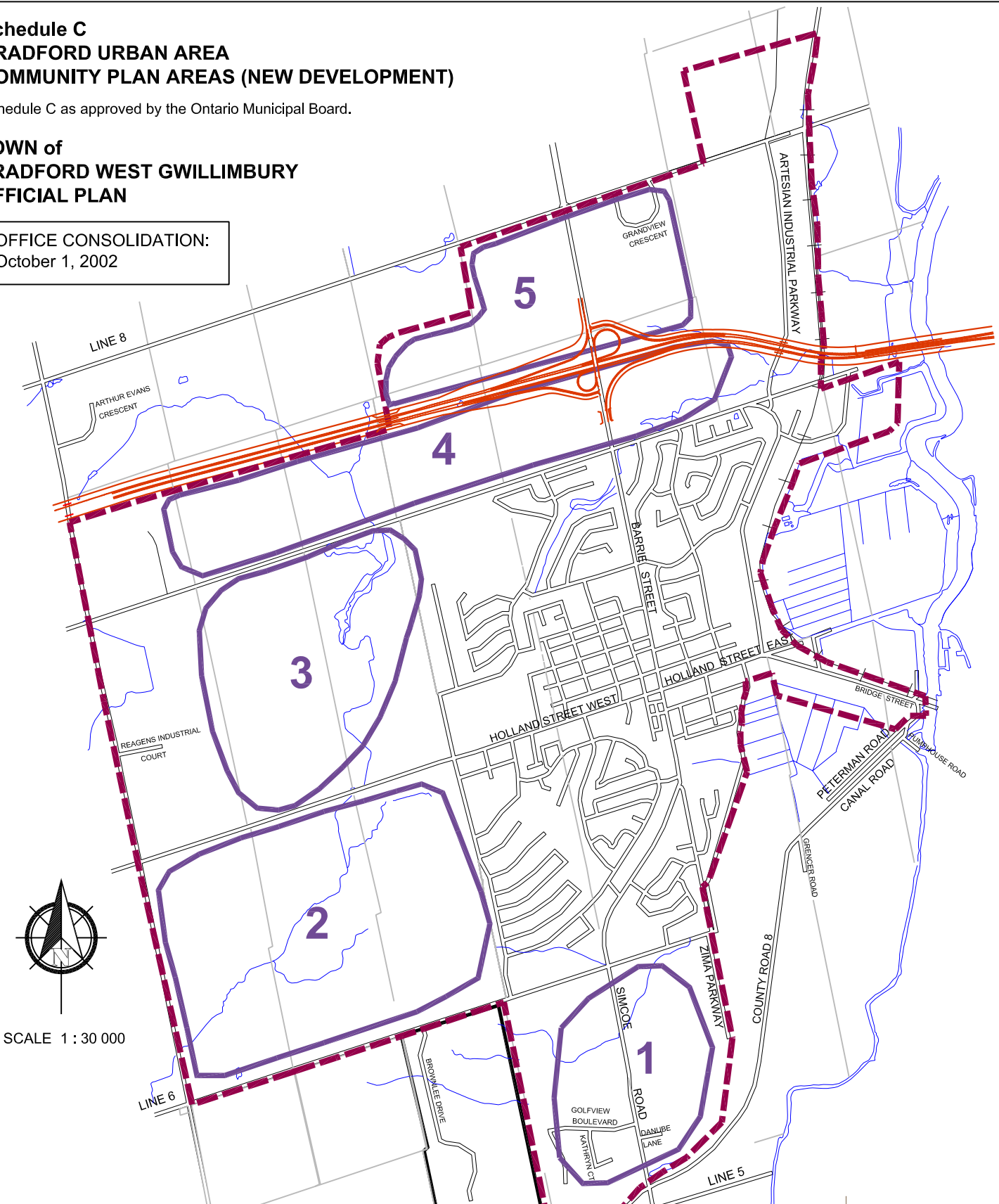


**Schedule C
BRADFORD URBAN AREA
COMMUNITY PLAN AREAS (NEW DEVELOPMENT)**







Schedule C as approved by the Ontario Municipal Board.

**TOWN of
BRADFORD WEST GWILLIMBURY
OFFICIAL PLAN**

OFFICE CONSOLIDATION:
October 1, 2002



LEGEND

-  Urban Boundary
-  Green Valley
-  South-West Quadrant
-  West Bradford
-  8th Line/404 Corridor
-  9th Line/404 Corridor

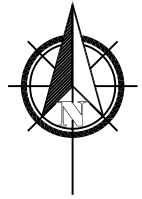


**Schedule D
BOND HEAD SETTLEMENT AREA
BOUNDARIES & EXPANSION AREA**

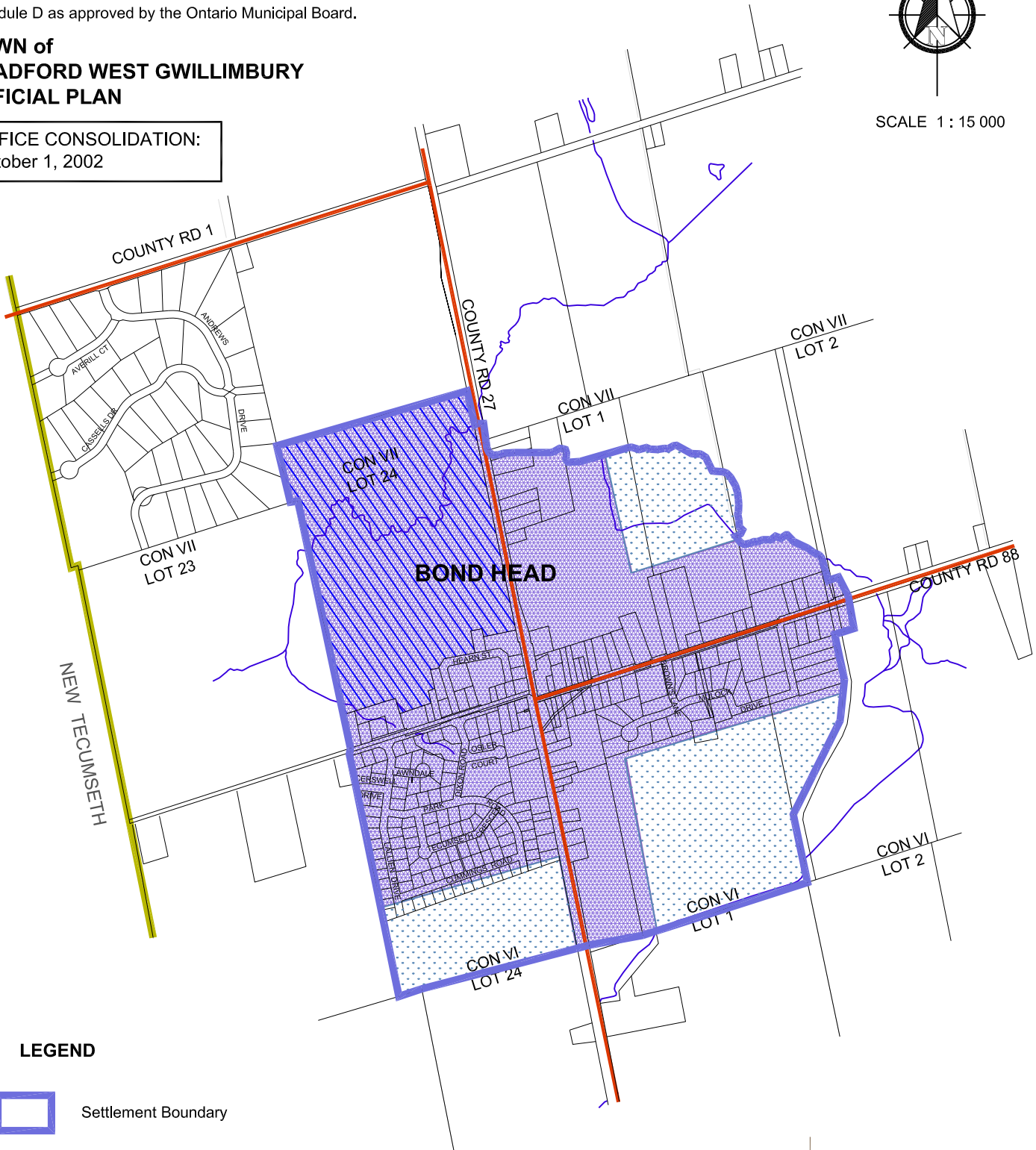
Schedule D as approved by the Ontario Municipal Board.

**TOWN of
BRADFORD WEST GWILLIMBURY
OFFICIAL PLAN**


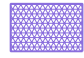
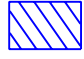

OFFICE CONSOLIDATION:
October 1, 2002



SCALE 1 : 15 000



LEGEND

-  Settlement Boundary
-  Existing and Approved Development Areas
-  Lands Subject to Special Provision 6.1.5
-  Future Expansion Area (Subject to Secondary Plan & Servicing Plan)



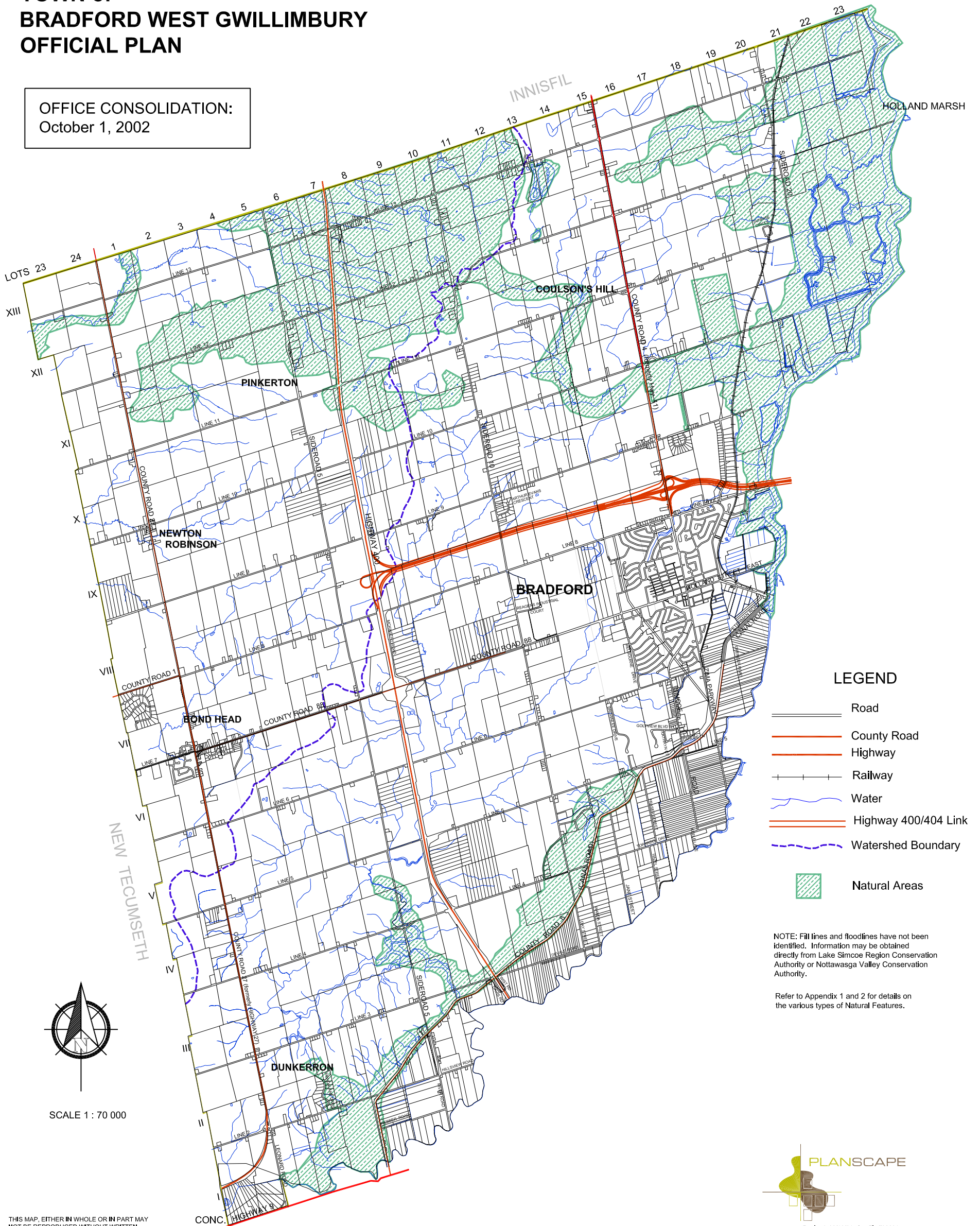
Revised: 02/10/01 Our File#36601

Schedule E NATURAL AREAS OVERLAY

Schedule E as approved the the Ontario Municipal Board.

TOWN of BRADFORD WEST GWILLIMBURY OFFICIAL PLAN

OFFICE CONSOLIDATION:
October 1, 2002



LEGEND

- Road
- County Road
- Highway
- Railway
- Water
- Highway 400/404 Link
- Watershed Boundary
- Natural Areas

NOTE: Fill lines and floodlines have not been identified. Information may be obtained directly from Lake Simcoe Region Conservation Authority or Nottawasaga Valley Conservation Authority.

Refer to Appendix 1 and 2 for details on the various types of Natural Features.



SCALE 1 : 70 000

THIS MAP, EITHER IN WHOLE OR IN PART MAY NOT BE REPRODUCED WITHOUT WRITTEN AUTHORITY OF THE COUNTY OF SIMCOE. PRODUCED UNDER LICENCE FROM ONTARIO MINISTRY OF NATURAL RESOURCES. COPYRIGHT (C) QUEEN'S PRINTER, 1997. FOR MORE INFORMATION CALL (705) 726-9300



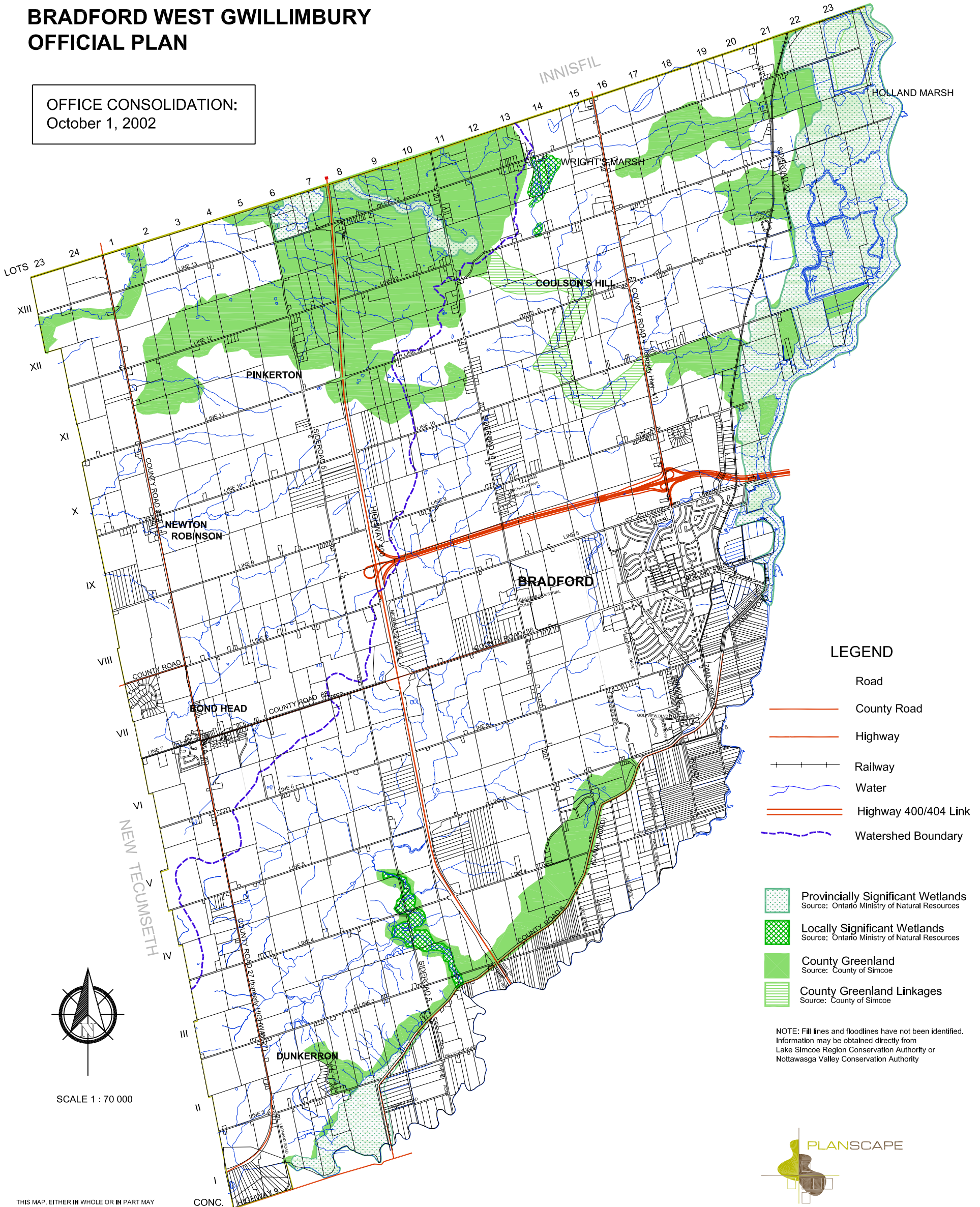
Revised: 02/10/01 Our File#36601

Appendix 1 NATURAL ENVIRONMENT FEATURES COUNTY GREENLANDS & LINKAGES WETLANDS

Appendix 1 as approved the the Ontario Municipal Board.

TOWN of BRADFORD WEST GWILLIMBURY OFFICIAL PLAN

OFFICE CONSOLIDATION:
October 1, 2002



LEGEND

- Road
- County Road
- Highway
- Railway
- Water
- Highway 400/404 Link
- Watershed Boundary

- Provincially Significant Wetlands
Source: Ontario Ministry of Natural Resources
- Locally Significant Wetlands
Source: Ontario Ministry of Natural Resources
- County Greenland
Source: County of Simcoe
- County Greenland Linkages
Source: County of Simcoe

NOTE: Fill lines and floodlines have not been identified. Information may be obtained directly from Lake Simcoe Region Conservation Authority or Nottawasaga Valley Conservation Authority



SCALE 1 : 70 000

THIS MAP, EITHER IN WHOLE OR IN PART MAY NOT BE REPRODUCED WITHOUT WRITTEN AUTHORITY OF THE COUNTY OF SIMCOE. PRODUCED UNDER LICENCE FROM ONTARIO MINISTRY OF NATURAL RESOURCES. COPYRIGHT (C) QUEEN'S PRINTER, 1997. FOR MORE INFORMATION CALL (705) 726-9300

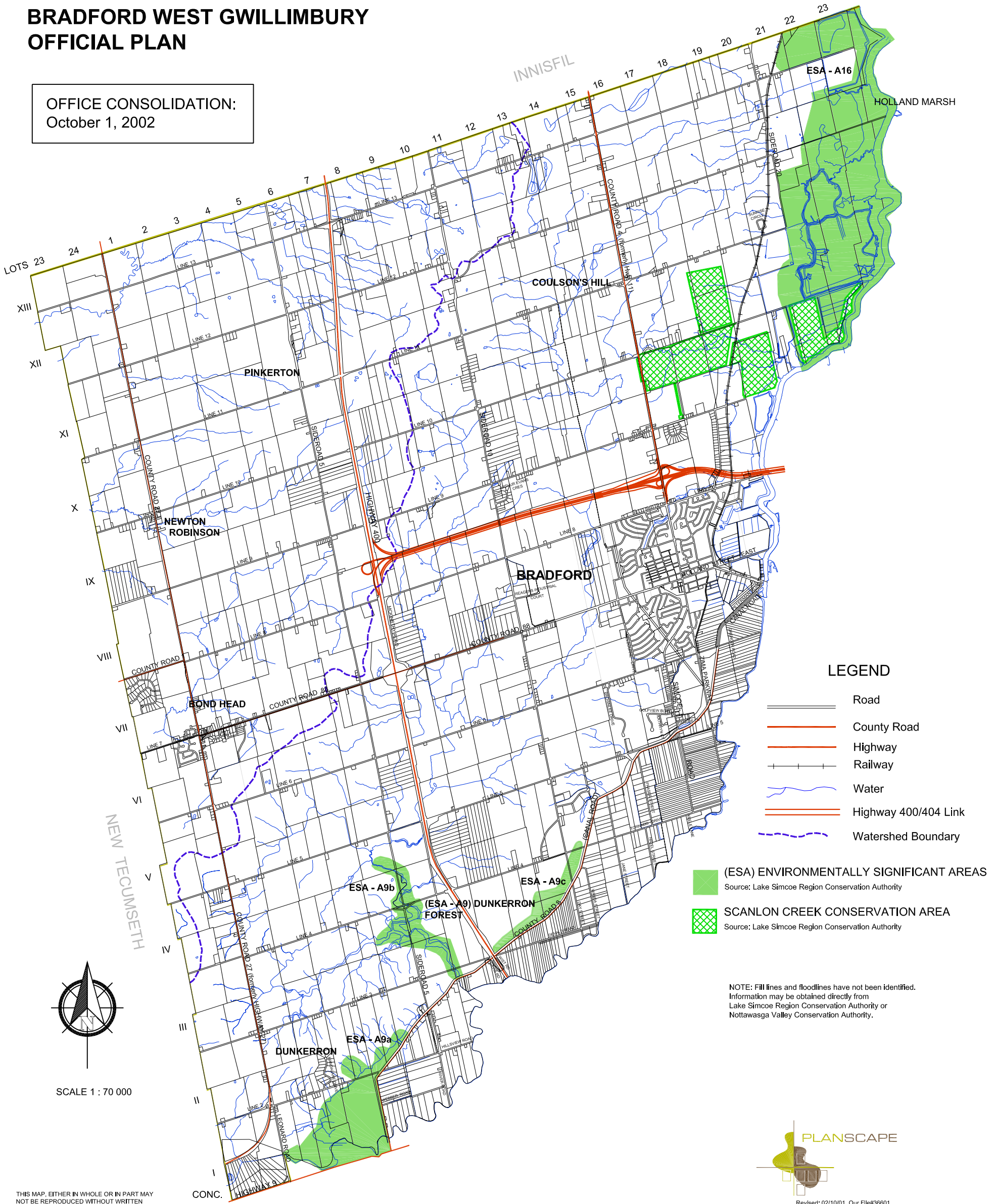


Appendix 2 NATURAL ENVIRONMENT FEATURES ENVIRONMENTALLY SIGNIFICANT AREAS

Appendix 2 as approved the the Ontario Municipal Board.

TOWN of BRADFORD WEST GWILLIMBURY OFFICIAL PLAN

OFFICE CONSOLIDATION:
October 1, 2002



LEGEND

- Road
- County Road
- Highway
- Railway
- Water
- Highway 400/404 Link
- Watershed Boundary

- (ESA) ENVIRONMENTALLY SIGNIFICANT AREAS
Source: Lake Simcoe Region Conservation Authority
- SCANLON CREEK CONSERVATION AREA
Source: Lake Simcoe Region Conservation Authority

NOTE: Fill lines and floodlines have not been identified.
Information may be obtained directly from
Lake Simcoe Region Conservation Authority or
Nottawasaga Valley Conservation Authority.



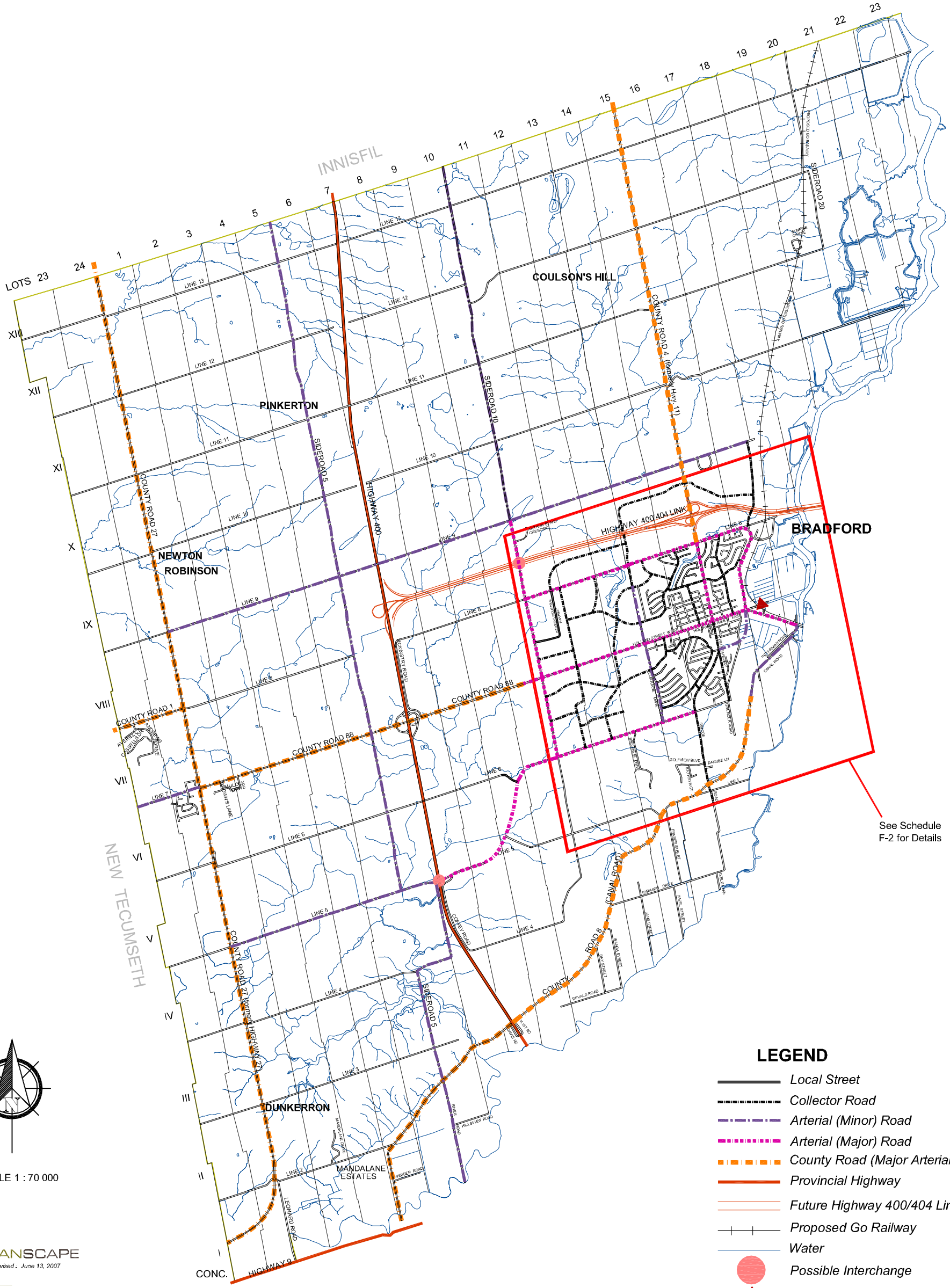
SCALE 1 : 70 000

THIS MAP, EITHER IN WHOLE OR IN PART MAY NOT BE REPRODUCED WITHOUT WRITTEN AUTHORITY OF THE COUNTY OF SIMCOE. PRODUCED UNDER LICENCE FROM ONTARIO MINISTRY OF NATURAL RESOURCES. COPYRIGHT (C) QUEEN'S PRINTER, 1997. FOR MORE INFORMATION CALL (705) 726-9300



SCHEDULE F-1 TRANSPORTATION

TOWN of BRADFORD WEST GWILLIMBURY OFFICIAL PLAN



See Schedule F-2 for Details

LEGEND

- Local Street
- Collector Road
- Arterial (Minor) Road
- Arterial (Major) Road
- County Road (Major Arterial)
- Provincial Highway
- Future Highway 400/404 Link
- Proposed Go Railway
- Water
- Possible Interchange
- Go Station

NOTES

- All other rural concession and side roads are considered to be collector roads.
- All other rural roads are local roads.
- Mid corridor collector roads will be provided in Lots 11-13, Conc 6, Lots 11-13, Conc 7 and Lots 11-12, Con 5.
- New arterial road projects are subject to Class EA Studies.
- Possible interchanges and/or crossing with Provincial and County corridors not included in approved environmental assessments will require additional study and works.



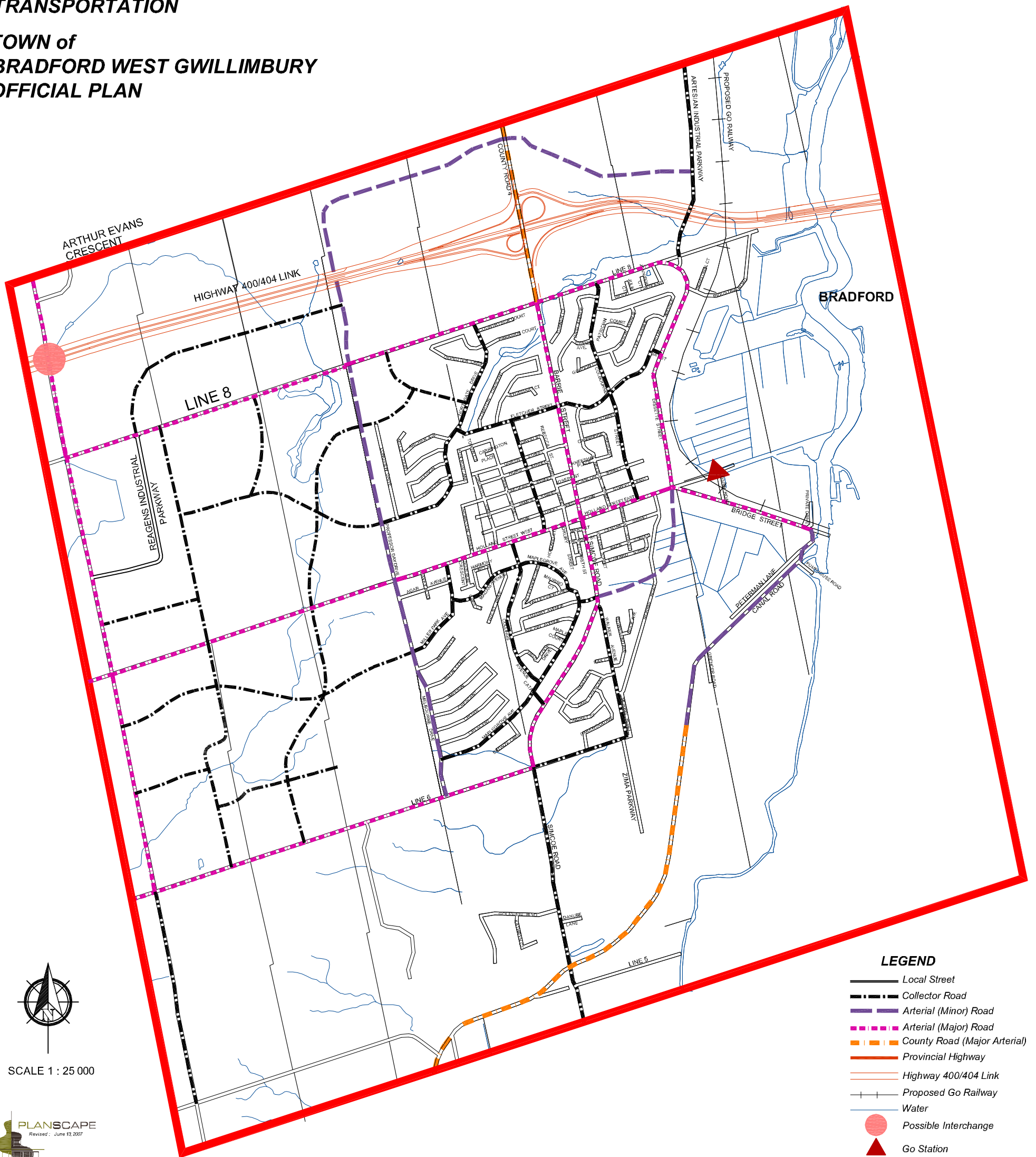
SCALE 1 : 70 000



THIS MAY, EITHER IN WHOLE OR IN PART MAY NOT BE REPRODUCED WITHOUT WRITTEN AUTHORITY OF THE COUNTY OF SIMCOE. PRODUCED UNDER LICENCE FROM ONTARIO MINISTRY OF NATURAL RESOURCES. COPYRIGHT (C) QUEEN'S PRINTER, 1997. FOR MORE INFORMATION CALL (705) 726-9300

**SCHEDULE F-2
TRANSPORTATION**

**TOWN of
BRADFORD WEST GWILLIMBURY
OFFICIAL PLAN**



SCALE 1 : 25 000



THIS MAP, EITHER IN WHOLE OR IN PART MAY NOT BE REPRODUCED WITHOUT WRITTEN AUTHORITY OF THE COUNTY OF SIMCOE. PRODUCED UNDER LICENCE FROM ONTARIO MINISTRY OF NATURAL RESOURCES. COPYRIGHT (C) QUEEN'S PRINTER 1997. FOR MORE INFORMATION CALL (705) 726-4300

LEGEND

- Local Street
- - - Collector Road
- - - Arterial (Minor) Road
- - - Arterial (Major) Road
- - - County Road (Major Arterial)
- Provincial Highway
- Highway 400/404 Link
- + - Proposed Go Railway
- Water
- Possible Interchange
- ▲ Go Station

NOTE:

- ▶ New arterial road projects are subject to Class EA Studies.
- ▶ Possible interchanges and/or crossing with Provincial and County corridors not included in approved environmental assessments will require additional study and works.