

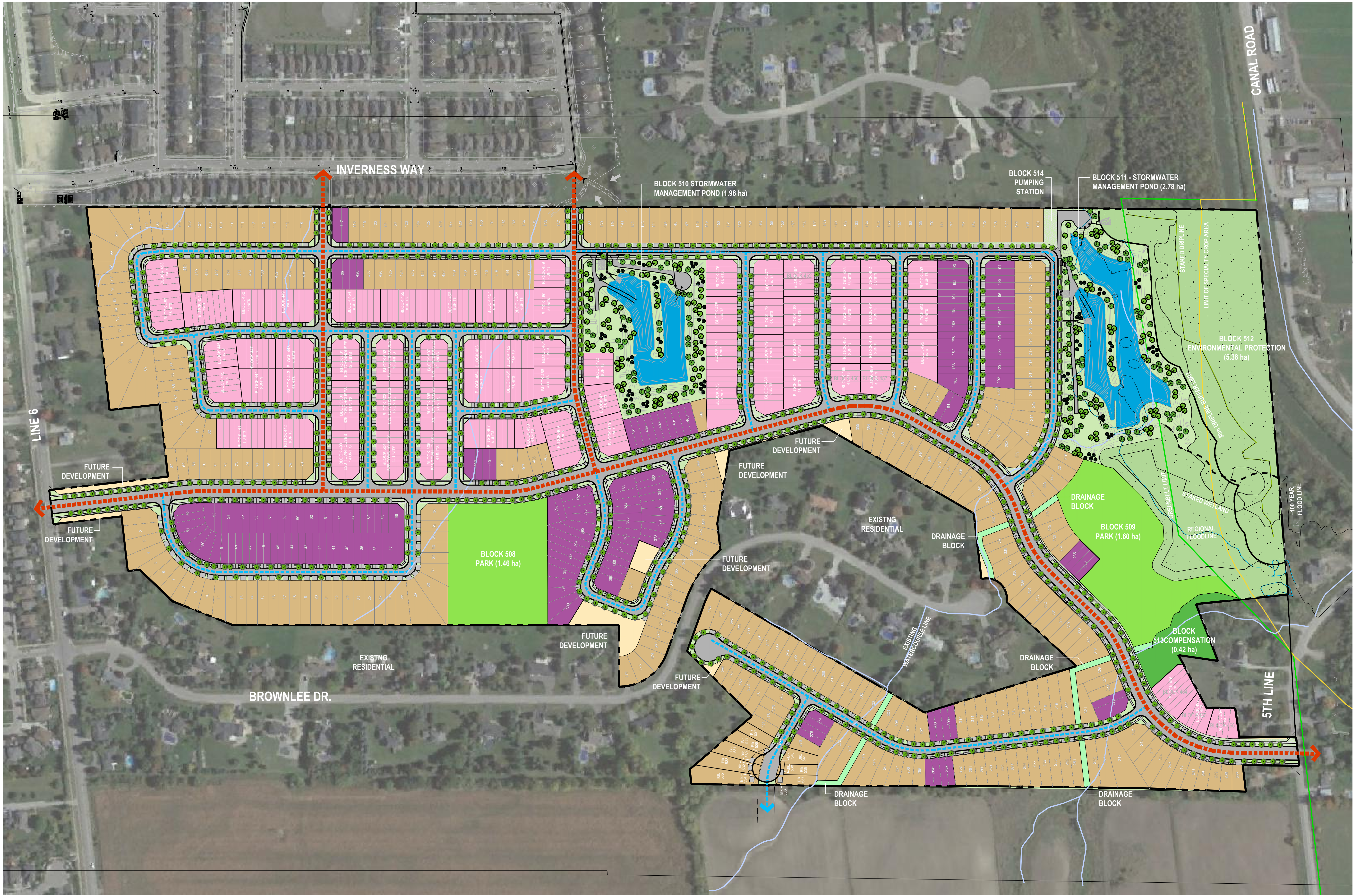
### KEY PLAN



KEY MAP  
N.T.S.

### LEGEND

- BOUNDARY OF SUBJECT APPLICATION
- GREEN BELT LIMIT
- LIMIT OF SPECIALTY CROP AREA
- STAKED WETLAND
- 30m STAKED WETLAND BUFFER LIMIT
- 30m STAKED DRIPLINE BUFFER LIMIT
- 100 YEAR FLOODLINE
- REGIONAL FLOODLINE
- COLLECTOR ROAD CONNECTIONS (SIDEWALKS ON BOTH SIDES OF STREET)
- LOCAL ROAD CONNECTIONS (SIDEWALK ON EITHER SIDE OF STREET)
- BOULEVARD TREE PLANTING
- STORMWATER MANAGEMENT POND PLANTING
- SINGLE FAMILY RESIDENTIAL LOT
- SEMI-DETACHED RESIDENTIAL LOT
- TOWNHOUSE RESIDENTIAL LOT
- CONCRETE WALKWAY PAVING
- ASPHALT PAVING
- SODDING
- PARKETTE BLOCK
- FUTURE DEVELOPMENT LOT
- STORM WATER MANAGEMENT POND
- ENVIRONMENTAL PROTECTION
- COMPENSATION BLOCK



# BRADFORD HIGHLANDS SUBDIVISION

## ZONING BY-LAW APPLICATION

SEPTEMBER 2023



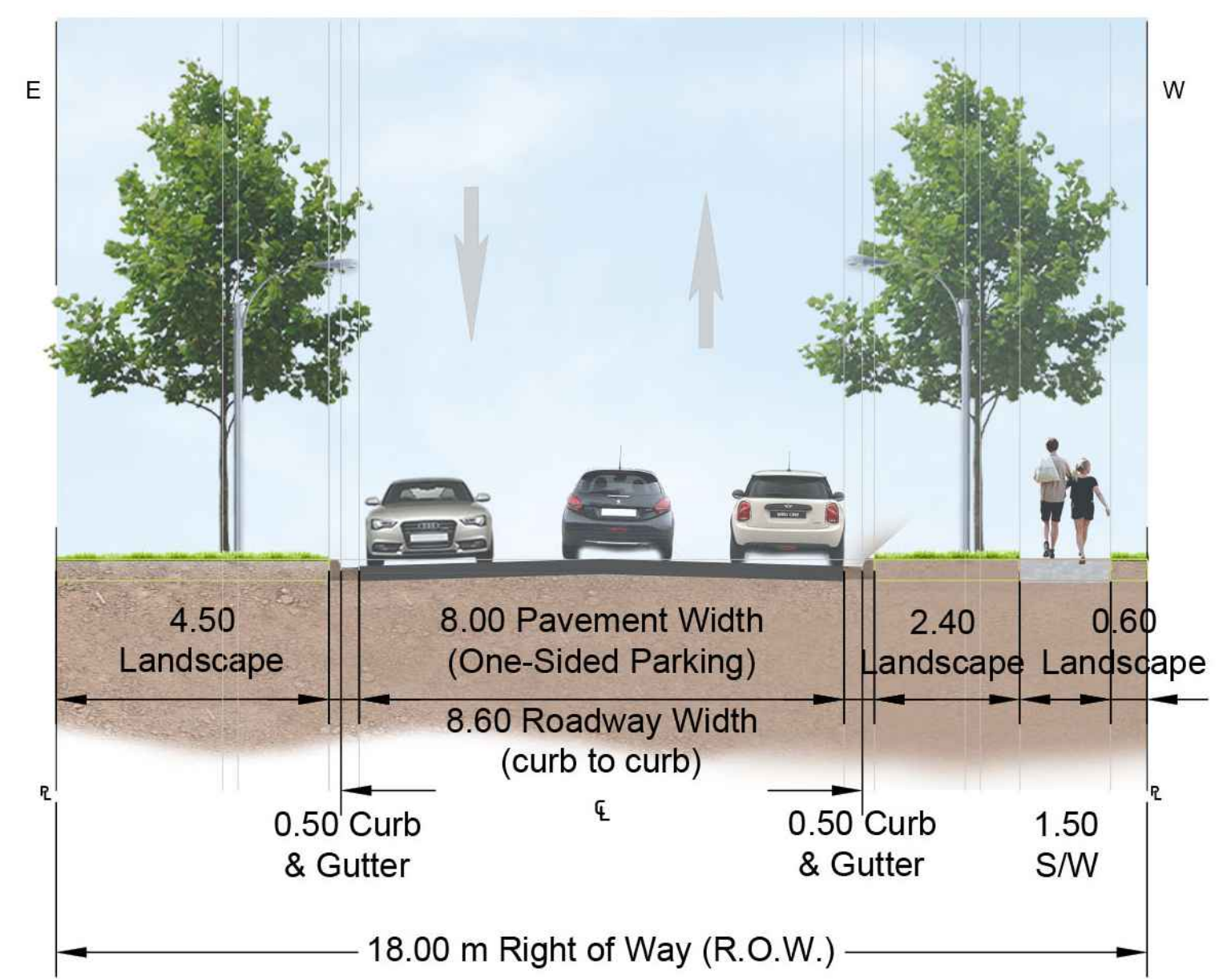
SCALE 1:2000



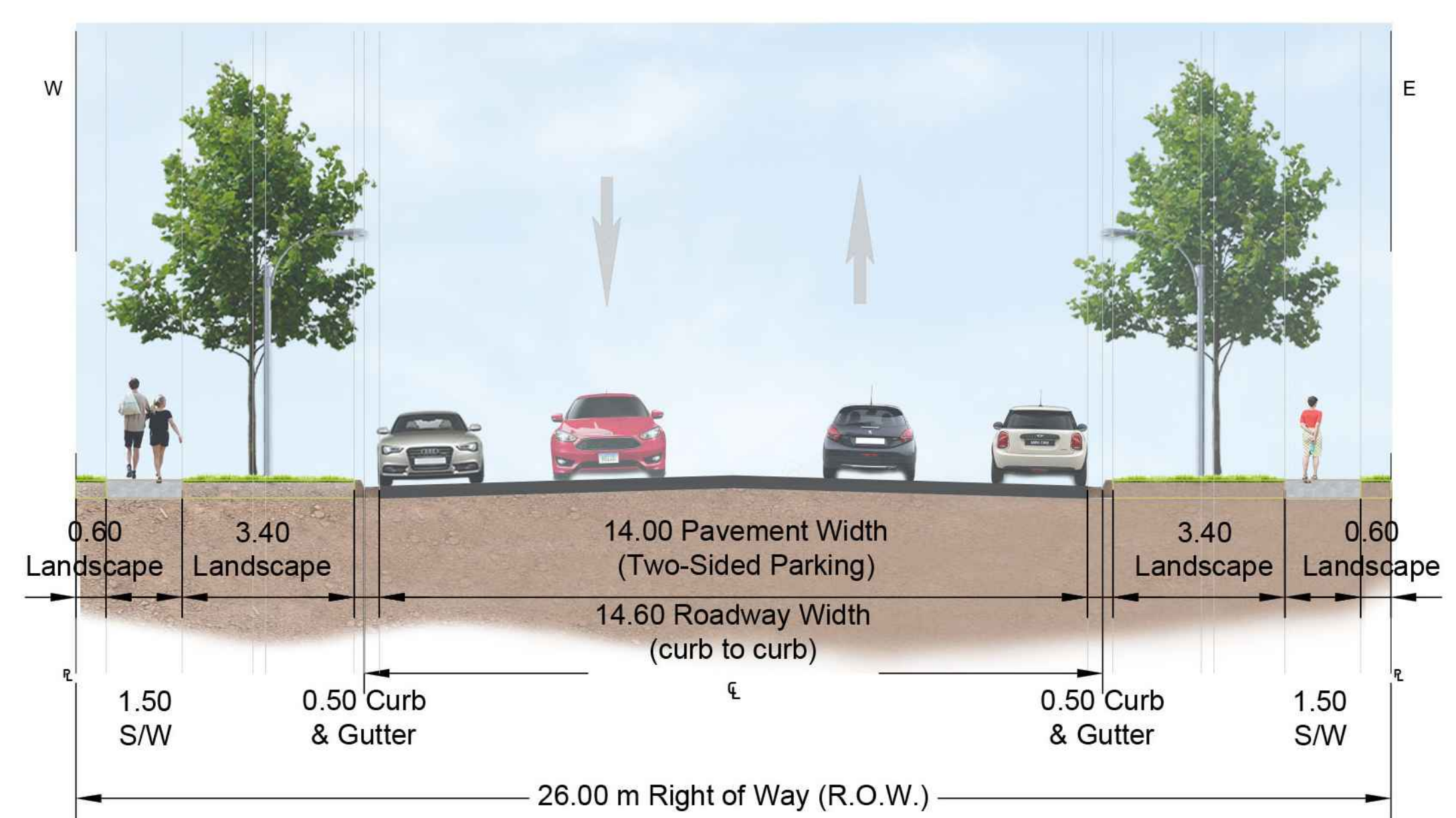
## LIST OF ACCEPTABLE STREET TREES

The list is based on the Engineering Criteria Manual by the Town of Bradford West Gwillimbury

- Black Locust  
*Robinia pseudoacacia*
- Silver Maple  
*Acer saccharinum*
- Red Maple  
*Acer rubrum*
- Sugar Maple  
*Acer saccharum*
- Burr Oak  
*Quercus macrocarpa*
- Red Oak  
*Quercus rubra*
- Basswood  
*Tilia americana*
- Serviceberry  
*Amelanchier*
- Ironwood  
*Ostrya virginiana*
- Hackberry  
*Celtis occidentalis*
- White Elm  
*Ulmus americana L*
- Largetooth Aspen  
*Populus grandidentata*
- Scarlet Oak  
*Quercus coccinea*
- White Oak  
*Quercus alba*
- Pin Oak  
*Quercus palustris*
- Tulip Tree  
*Liriodendron*



SECTION A-A: Public Street Cross-Section  
18.0m ROW – 8.0m Pavement Width (8.6m Roadway Width) with 2.5m One-Sided Parking Spaces & 1.5m Sidewalk on one Side



SECTION B-B: Public Street Cross-Section  
26.0m ROW – 14.0m Pavement Width (14.6m Roadway Width) with 2.5m Two-Sided Parking Spaces & 1.5m Sidewalk on both Sides



Basswood  
*Tilia americana*



Black Locust  
*Robinia pseudoacacia*



Burr Oak  
*Quercus macrocarpa*



Hackberry  
*Celtis occidentalis*



Ironwood  
*Ostrya virginiana*



Red Maple  
*Acer rubrum*



Pin Oak  
*Quercus palustris*



Silver Maple  
*Acer saccharinum*



Sugar Maple  
*Acer saccharum*



STREETSCAPE



STORMWATER MANAGEMENT POND



PARK

