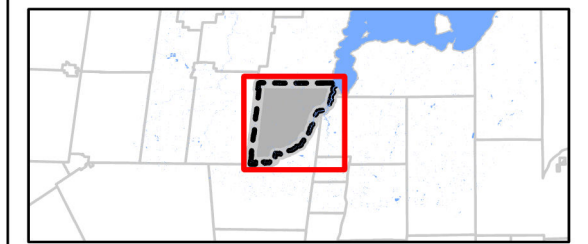
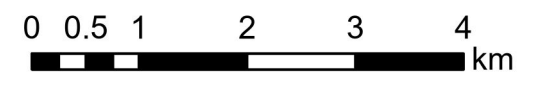


BRADFORD WEST GWILLIMBURY

**SCHEDULE A
URBAN STRUCTURE AND
BUILT BOUNDARY**

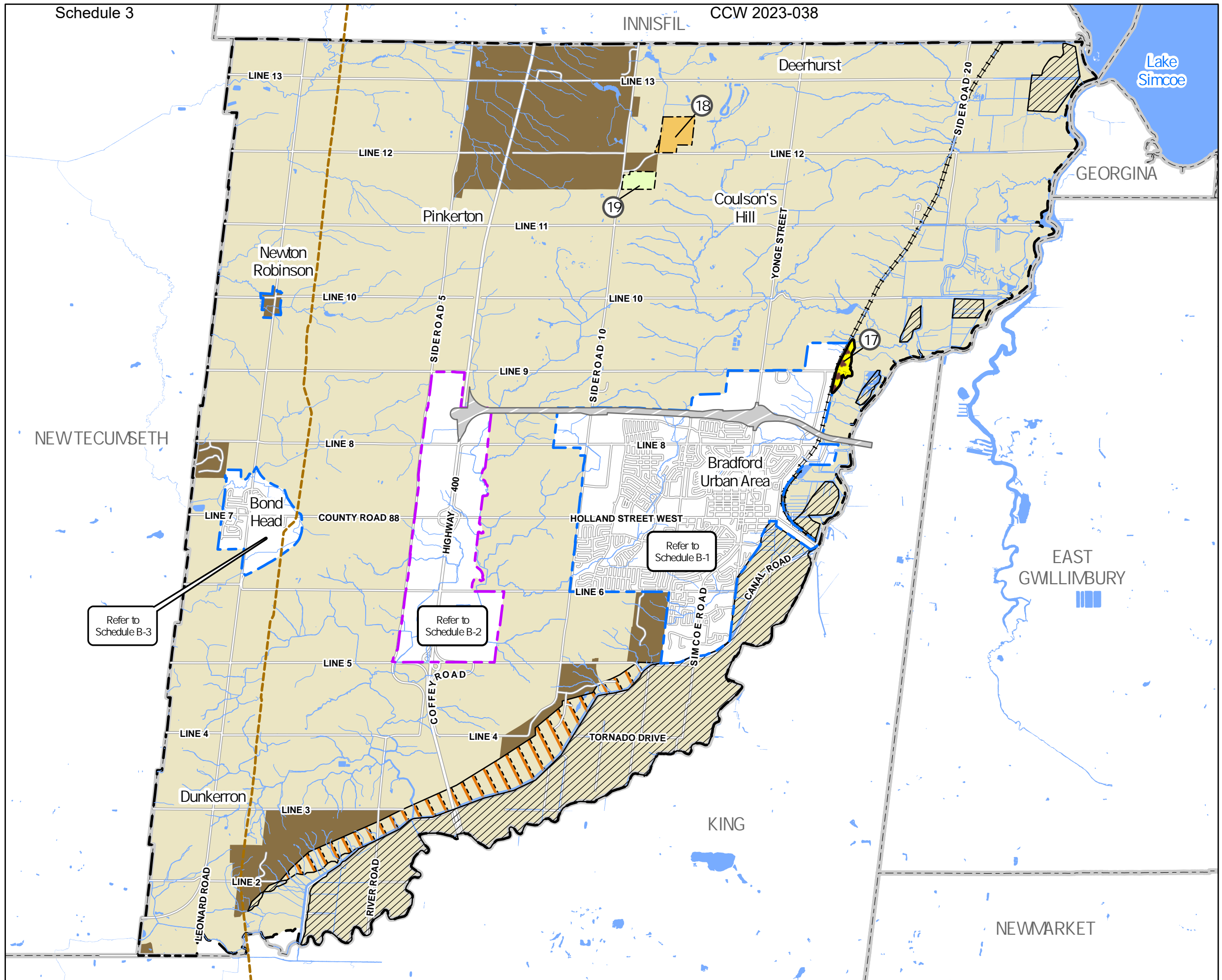


- Bradford West Gwillimbury Boundary
- Settlement Area Boundary
- Highway 400 Employment Lands Boundary
- Roads
- Highway 400 - 404 Link (Future)
- Railway
- Trans Canada Pipeline
- Watercourses
- Delineated Built Boundary
- Designated Greenfield Area
- Highway 400 Employment Lands



Last Modified:
January 23, 2023 per Modifications endorsed
by Town Council on September 20, 2022
Adopted by Town Council:
March 2, 2021
(By-law 2021-17)

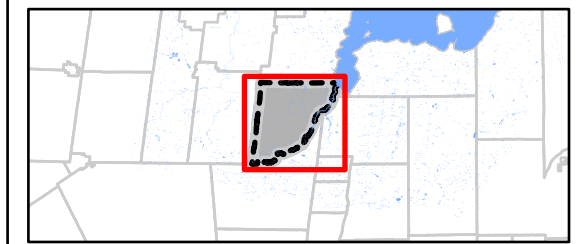




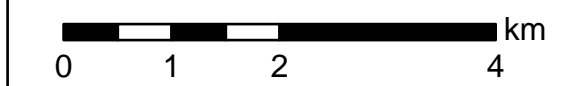
BRADFORD WEST GWILLIMBURY
OFFICIAL PLAN *Building Our Tradition*

BRADFORD WEST GWILLIMBURY

SCHEDULE B
 LAND USE



- Bradford West Gwillimbury Boundary
- Settlement Area Boundary
- Highway 400 Employment Lands Boundary
- Roads
- Highway 400 - 404 Link (Future)
- Railway
- Trans Canada Pipeline
- Watercourses
- Marsh Protection Buffer
- Marsh Agriculture
- Special Policy Area 17
- Special Policy Area 18 (Active and Approved Waste Disposal Site)
- Special Policy Area 19 (Non-Decision Lands)
- Land Use Designations**
- Agricultural
- Rural



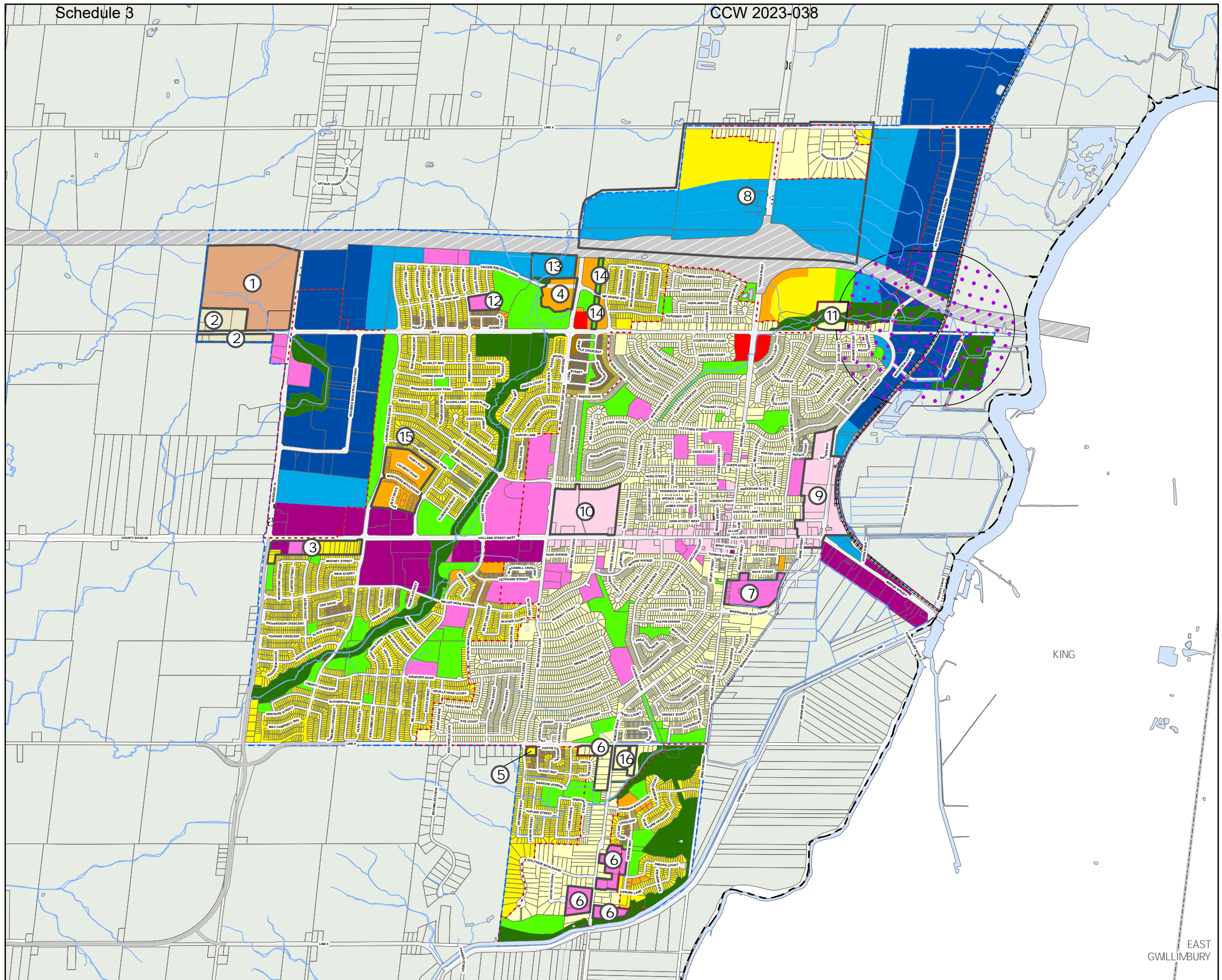
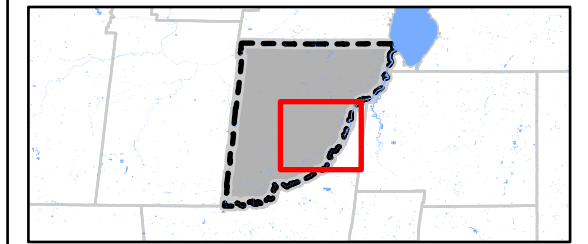
Last Modified:
 January 23, 2023 (per Modifications endorsed
 by Town Council on September 20, 2022)
 Adopted by Town Council:
 March 2, 2021
 (By-law 2021-17)



BRADFORD WEST GWILLIMBURY OFFICIAL PLAN Building Our Tradition

BRADFORD WEST GWILLIMBURY

SCHEDULE B-1 LAND USE BRADFORD URBAN AREA



- Bradford West Gwillimbury Boundary
- Settlement Area Boundary
- Delineated Built Boundary
- Roads
- Highway 400- 404 Link (Future)
- Railroad
- Watercourses
- Waste Disposal Assessment Area
- Land Use Designations**
- Residential Built Up
- Low Density Residential
- Medium Density Residential
- High Density Residential
- Neighbourhood Commercial
- Community Commercial
- Community Uses
- Downtown Bradford
- Open Space/Recreation
- Environmental Protection
- Industrial
- Industrial/Commercial
- ① Special Policy Area 1 (Section 6.1)
- ② Special Policy Area 2 (Section 6.2)
- ③ Other Special Policy Areas

Last Modified: January 23, 2023 (per Modifications endorsed by Town Council on September 20, 2022) Adopted by Town Council: March 2, 2021 (By-law 2021-17)

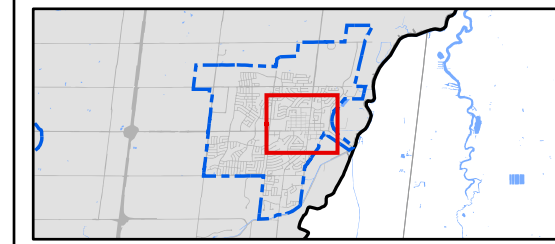


EAST GWILLIMBURY



BRADFORD WEST GWILLIMBURY
OFFICIAL PLAN *Building Our Tradition*
BRADFORD WEST GWILLIMBURY

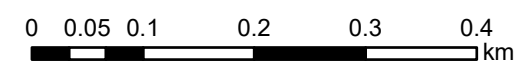

SCHEDULE B-1A
HEIGHTS IN
DOWNTOWN BRADFORD -




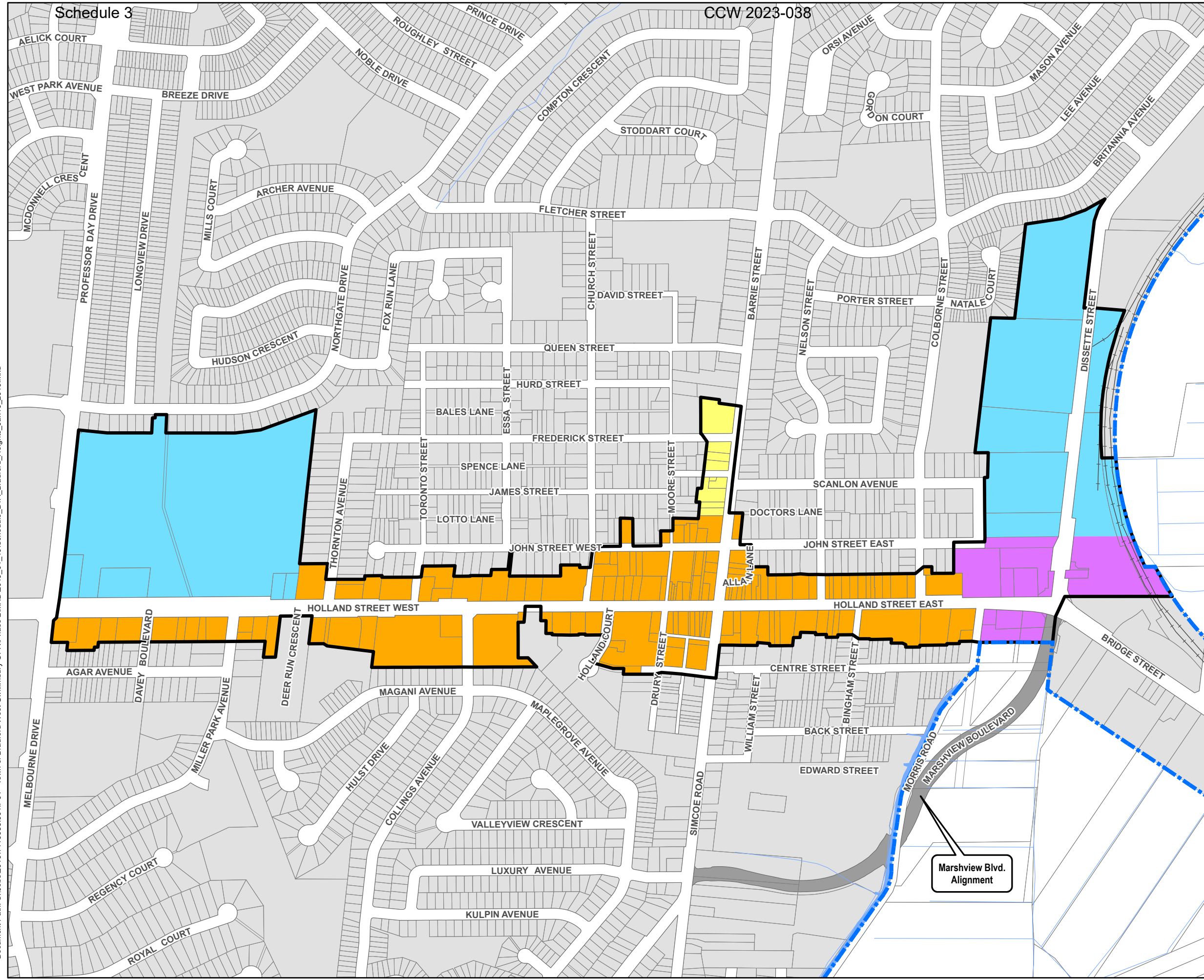
- Settlement Area Boundary
- Downtown Bradford Designation Boundary
- Roads
- Railway
- Watercourses

	Minimum Number of Storeys	Maximum Number of Storeys
	2	4
	2	6
	4*	8
	4	10

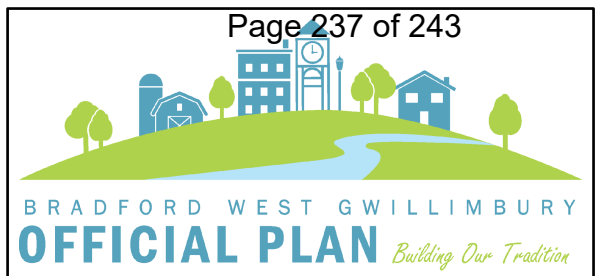
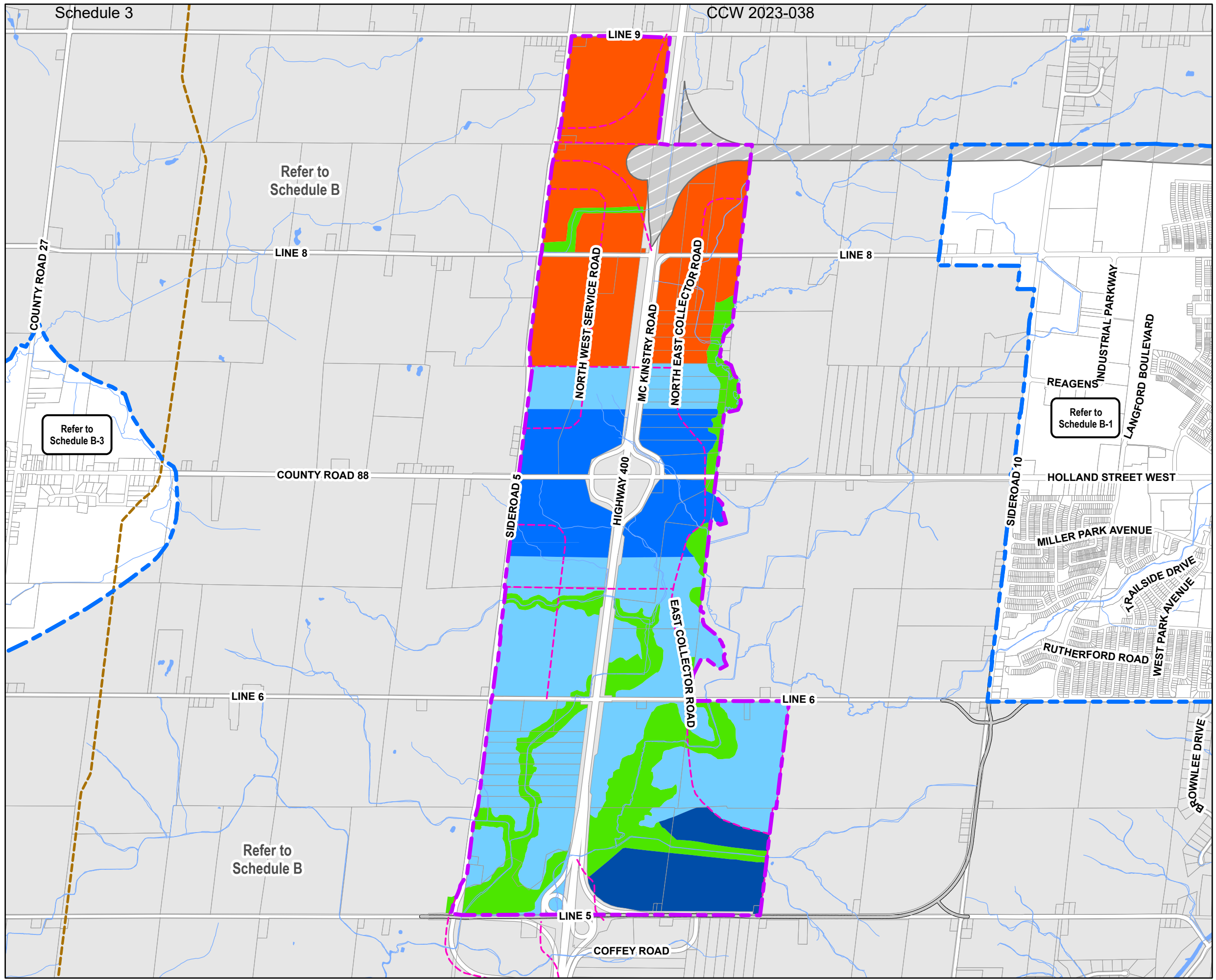
*NOTE: Reduced minimums and additional storeys through bonuses may be permitted in the text of the Official Plan. Refer to any applicable Special Policy Area, the design policies of this Plan, and any urban design guidelines with applicability.

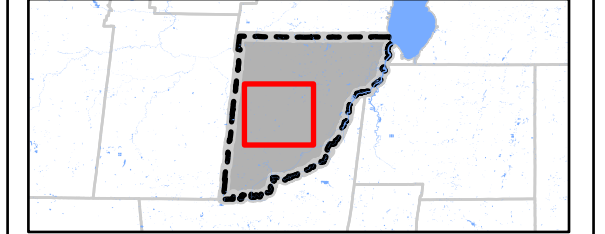
Last Modified:
 February 9, 2021
 Adopted by Town Council:
 March 2, 2021
 (By-law 2021-17)

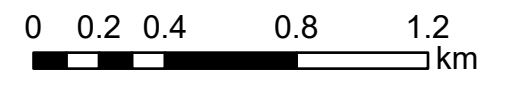
Document Path: S:\Jobs\2016\1416033\001_P01 - Town of Bradford West Gwillimbury OPRA\Phase 2\MXD\2019_01_10\Schedule_B1A_Bradford_Heights_Jan10_2019.mxd



**BRADFORD WEST GWILLIMBURY
SCHEDULE B-2
LAND USE
HIGHWAY 400 EMPLOYMENT
LANDS SECONDARY PLAN**



- Settlement Area Boundary
 - Highway 400 Employment Lands Boundary
 - Roads
 - Highway 400 - 404 Link (Future)
 - Trans Canada Pipeline
 - Watercourses
 - Potential 'Collector' Road
- Land Use Designations**
- Highway 400 Lands Industrial [Area A]
 - Highway 400 Lands Interchange [Area B]
 - Highway 400 Lands Industrial/Commercial [Area C]
 - Employment Lands Reserve (Area D)
 - Environmental Protection

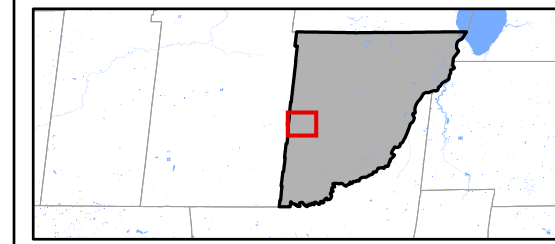


Last Modified:
January 23, 2023 (per Modifications endorsed
by Town Council on September 20, 2022)
Adopted by Town Council:
March 2, 2021
(By-law 2021-17)

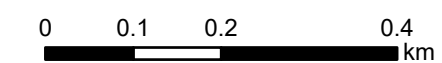




**SCHEDULE B-3
LAND USE
BOND HEAD SECONDARY PLAN**



- Bradford West Gwillimbury Boundary
- Settlement Area Boundary
- Roads
- Trans Canada Pipeline
- Trail System (Conceptual)
- Watercourses
- OPA #16 - Potential Roads**
 - Collector
 - County Road 27 Connectors
 - County Road 27 Bypass
- Land Use Designations**
 - Heritage Residential
 - Low Density Residential
 - Medium Density Residential
 - Village Core Area
 - Employment Area
 - Environmental Protection
 - Community Facility
 - School
 - Stormwater Management Facility
 - Neighbourhood Park
 - Village Square
- Special Policy Areas**
 - BH1
 - BH2
 - BH3



Schedule 3

CCW 2023-038

ANDREWS DRIVE

LINE 7

COUNTY ROAD 88

CUMMINGS ROAD

LINE 6

COUNTY ROAD 27

COUNTY ROAD 88

MULOCK DRIVE

HEARN STREET

PARK ROAD

DIXON ROAD

LALLEN DRIVE

VS

SP

SP

BH2

BH1

P

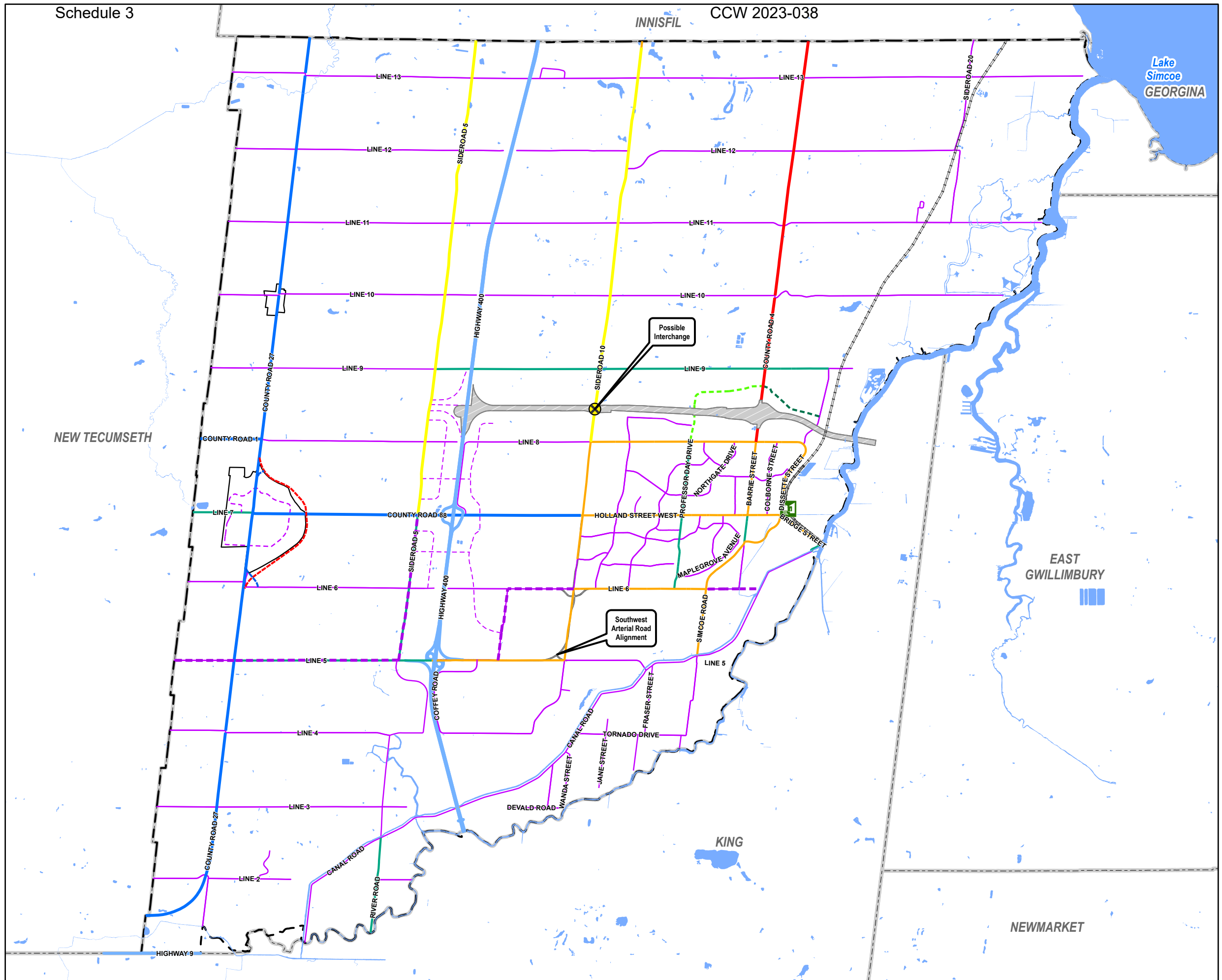
BH1

P

BH3

SP

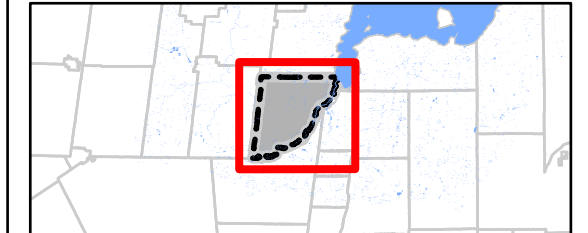
Document Path: S:\Jobs\2016\1416033\001.P01 - Town of Bradford West Gwillimbury OPRA\Phase 2\MXD\2019_01_10\Schedule_B3_BondHead_LandUse_Jan10_2019.mxd



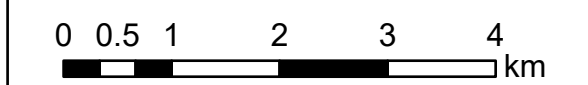
BRADFORD WEST GWILLIMBURY
OFFICIAL PLAN *Building Our Tradition*

BRADFORD WEST GWILLIMBURY

SCHEDULE C
TRANSPORTATION PLAN



- Bradford West Gwillimbury Boundary
- Higher Order Transit Station
- Railway
- Town Road Classifications**
 - Arterial-Major
 - Arterial-Minor
 - Collector
 - Potential - 'Arterial-Minor' Road (OP 2002)
 - Potential - 'Arterial-Minor' Road (OPA #17)
 - Potential - 'Collector' Road (OPA #15)
- County Road Classifications (County OP 2008)**
 - Primary Arterial - Controlled Access
 - County Primary Arterial
 - Secondary Arterial
 - Potential Future County Road - 30.5m Road Width
 - Potential - 'County Road 27 Connector' (OPA #16)
 - Potential - 'County Road 27 Bypass Road' (OPA #16)
- Provincial Road Classifications (OP 2002)**
 - Provincial Highway
 - Highway 400 - 404 Link Boundary

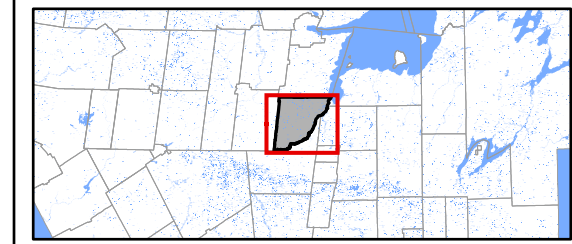


Last Modified:
 January 23, 2023 (per Modifications endorsed
 by Town Council on September 20, 2022)
 Adopted by Town Council:
 March 2, 2021
 (By-law 2021-17)



BRADFORD WEST GWILLIMBURY OFFICIAL PLAN Building Our Tradition BRADFORD WEST GWILLIMBURY

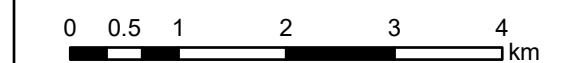
SCHEDULE D-1 COUNTY & GREENBELT FEATURES



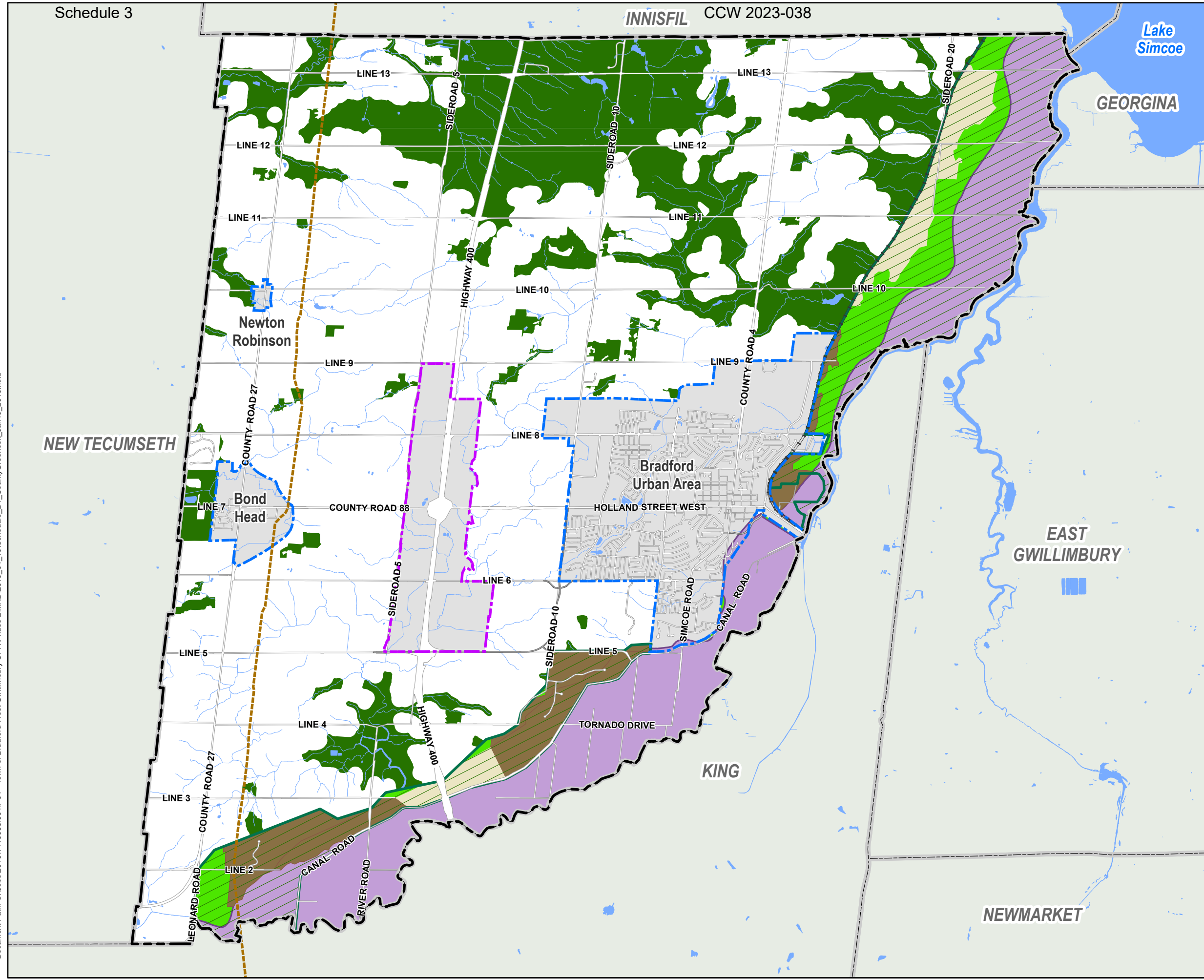
- Bradford West Gwillimbury Boundary
- Settlement Area Boundary
- Highway 400 Employment Lands Boundary
- Roads
- Railway
- Trans Canada Pipeline
- Watercourses

Land Use Designations (County of Simcoe Official Plan Schedule 5.1)

- Greenlands
- Greenbelt Plan (County of Simcoe Official Plan Schedule 5.3.3)
 - Protected Countryside
 - Greenbelt Natural Heritage System
 - Holland Marsh (Specialty Crop Areas)
 - Agricultural
 - Rural



WSP Last Modified: February 9, 2021
 Adopted by Town Council: March 2, 2021
 (By-law 2021-17)

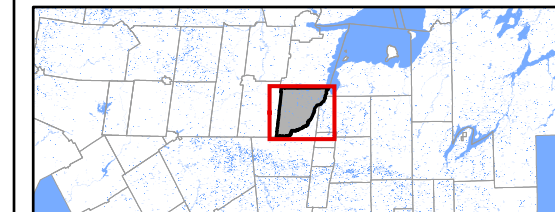


Document Path: S:\Jobs\2016\1416033\001_P01 - Town of Bradford West Gwillimbury OPRA\Phase 2\MXD\2019_01_10\Schedule_D1_CountyGreenbelt_Jan10_2019.mxd



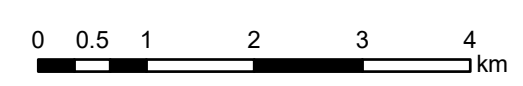
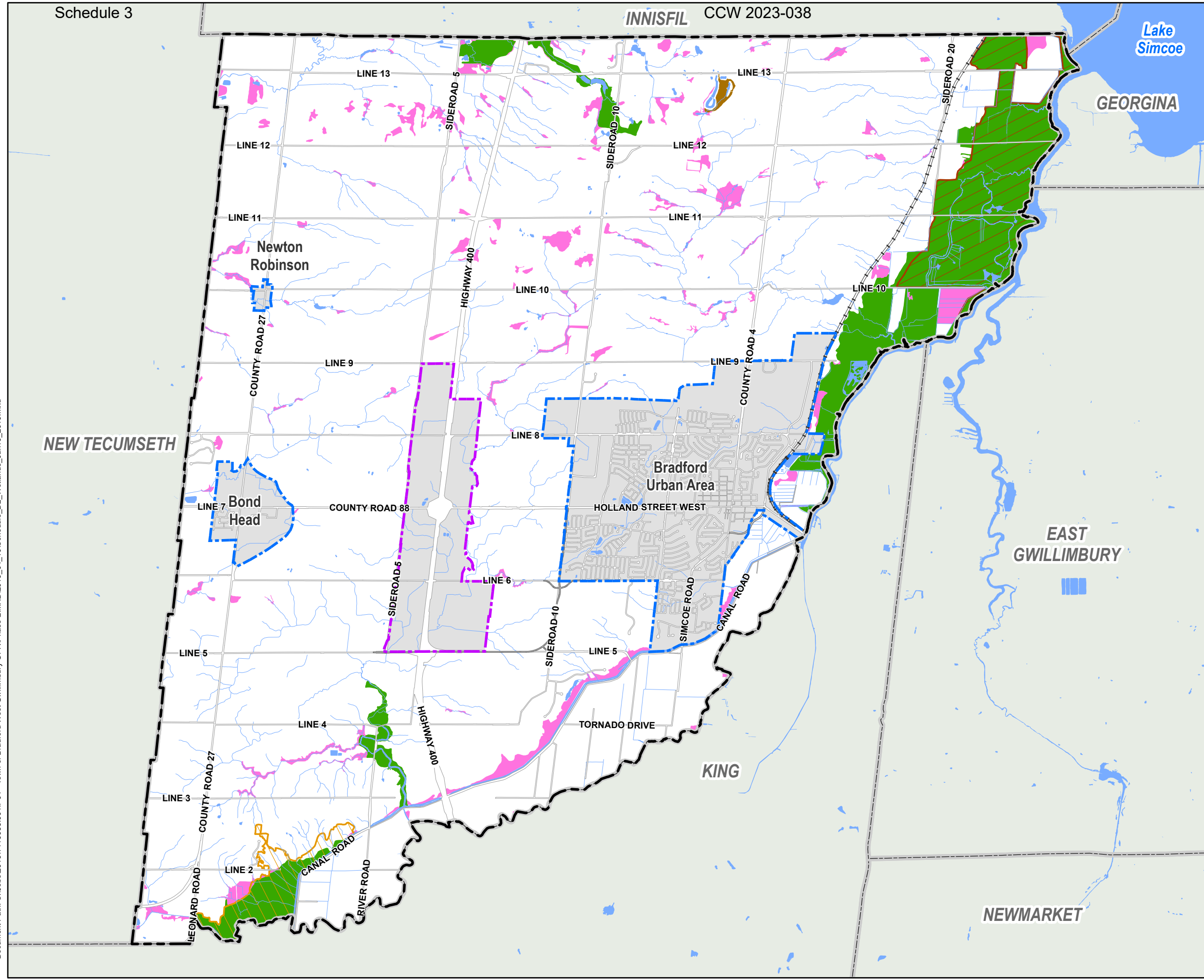

BRADFORD WEST GWILLIMBURY OFFICIAL PLAN Building Our Tradition

BRADFORD WEST GWILLIMBURY SCHEDULE D-2 WETLANDS AND AREAS OF NATURAL AND SCIENTIFIC INTEREST



- Bradford West Gwillimbury Boundary
 - Settlement Area Boundary
 - Highway 400 Employment Lands Boundary
 - Roads
 - Railway
 - Watercourses
- Evaluated Wetlands**
- Provincially Significant
 - Locally Significant
 - Not evaluated per Ontario Wetland Evaluation System
- Area of Natural and Scientific Interest - Provincial**
- Holland River Marsh
 - Pottageville Swamp

Document Path: S:\Jobs\2016\1416033\001.P01 - Town of Bradford West Gwillimbury OP\Phase 2\MXD\2019_01_10\Schedule_D2_Wetlands_Jan10_2019.mxd

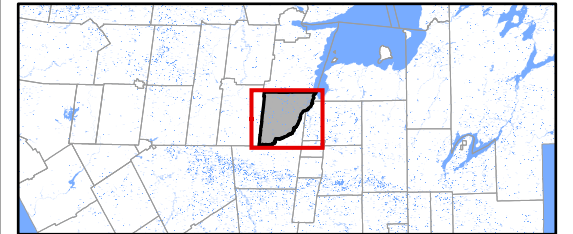



Last Modified:
February 9, 2021
Adopted by Town Council:
March 2, 2021
(By-law 2021-17)

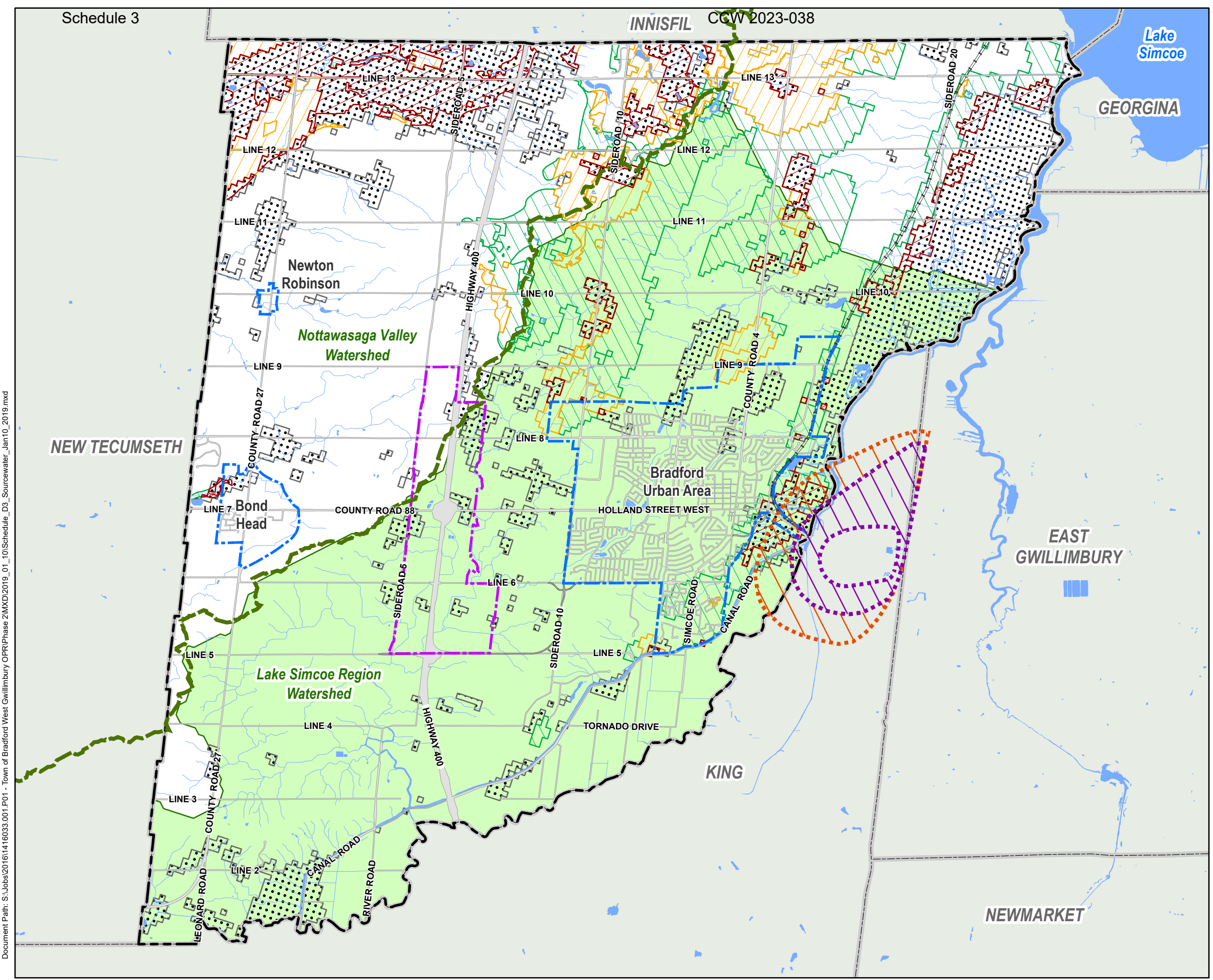
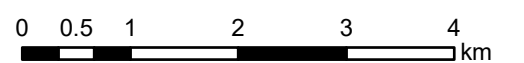




**SCHEDULE D-3
SOURCE PROTECTION**



- Bradford West Gwillimbury Boundary
- Settlement Area Boundary
- Highway 400 Employment Lands Boundary
- Watershed Boundary
- Roads
- Railway
- Watercourses
- Highly Vulnerable Aquifer
- Significant Groundwater Recharge Area - Vulnerability Level**
- Low
- Medium
- High
- Wellhead Protection Area**
- Zone C1
- Zone D
- Wellhead Protection Area Q2

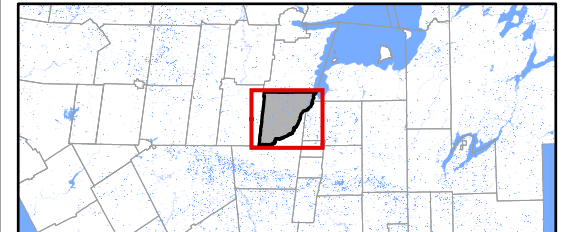


Document Path: S:\Jobs\2016\1416033\001_P01 - Town of Bradford West Gwillimbury OPRA\Phase 2\MXD\2019_01_10\Schedule_D3_Sourcewater_Jan10_2019.mxd

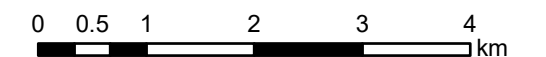


BRADFORD WEST GWILLIMBURY OFFICIAL PLAN Building Our Tradition BRADFORD WEST GWILLIMBURY

SCHEDULE D-4 AGGREGATE RESOURCES, CONSTRAINTS AND HAZARDS



- Bradford West Gwillimbury Boundary
- Settlement Area Boundary
- Highway 400 Employment Lands Boundary
- Watershed Boundary
- Roads
- Railway
- Watercourses
- Waste Disposal Assessment Area
- Active Waste Disposal Site (County Owned)
- Closed Waste Disposal Site (County Owned)
- Primary Sand and Gravel Resources (County Official Plan OMB Approved)
- Licensed Pits and Quarries (County Official Plan OMB Approved)
- Nottawasaga Valley Conservation Authority**
- Flood Hazard
- Regulation Slope Hazard
- Lake Simcoe Region Conservation Authority**
- Floodplain
- Apparent Valley



Last Modified: February 9, 2021 Adopted by Town Council: March 2, 2021 (By-law 2021-17)

